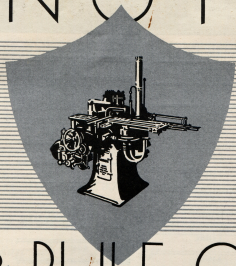


MONOTYPE



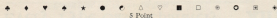
TYPE-&-RULE CASTER

Makes Type, Ornaments, Piece
Borders, Rules, Leads and Slugs.
Its Products Improve the Quality
of Printing and Lower the Cost

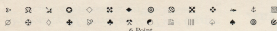
LANSTON MONOTYPE MACHINE COMPANY, PHILADELPHIA 3, PENNA.

MONOTYPE TYPE-&-RULE CASTER MAKES TYPE

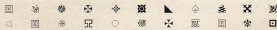
These Are Typical Ornaments & Borders From 5 to 36 Point



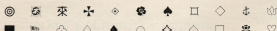
5 Point



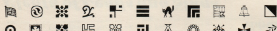
6 Point



8 Point



10 Point



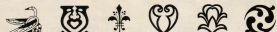
12 Point



18 Point



24 Point



30 Point



36 Point

This Shows the Range

The Monotype Typesetting Machine sets type in all measures up to 60 picas in all sizes from 4 to 18 point. Straight matter, tables and intricate work, ruled forms, cuts and large work-in-fact, all kinds of typesetting—see size with unassisted loading and speed. No other machine combines within the scope of its operation so wide a range of

4 Point Modern, No. 8 Series

The Monotype Type-&-Rule Caster casts type for the cases in all sizes from 4 point to 36 point inclusive. The operation of this machine is exceedingly simple. The matrices for casting display type are stored in a small box, only one matrix being required for each character of the font. The matrix for the desired character is placed in

4 1/2 Point Binny Old Style, No. 21 Series

The matrix for the desired character is placed in the matrix holder, which is inserted in the machine. The galle and speed control are adjusted, instantly, for the character to be cast. The machine then continues to cast duplicates of this character until the operator has

5 Point Binny Old Style, No. 21 Series

There are two types of display molds; adjustable molds, each of which casts three point-sizes of type, and single-point-size molds, which are right as to body size and cast but one point-size to each mold. A type cover is useless without type faces. In the 3 1/2 Monotype Specimen

5 1/2 Point Binny Old Style, No. 21 Series

Under The Monotype System New Type, Decorative Material, Leads, Rules, Slugs and metal furniture are provided in unlimited supply for the use in hand composition and at a cost so low that non-distribution becomes an economy as well as a convenience

6 Point Binny Old Style, No. 21 Series

The Type-&-Rule Caster, as a type foundry, produces type in unlimited quantities, new type, true in set-size, point size, and height-to-paper, and

7 Point Binny Old Style, No. 21 Series

The Monotype Typesetting Machine Sets Type In All Measures Up to 60 picas wide in all sizes from 4 to 18 point for straight matter work

8 Point Binny Old Style, No. 21 Series

The Monotype Type-&-Rule Caster Makes Type, Strip and Piece rules, leads and slugs for all requirements in the composing room

9 Point Binny Old Style, No. 21 Series

Monotype Versatility Is Known By Every Printer Using Monotype machines for composing room needs and supplies

10 Point Binny Old Style, No. 21 Series

Monotype Rental

The Monotype Matrix Library is maintained at our Main Office in Philadelphia for the convenience and accommodation of Monotype users. The Library provides a means whereby owners of Monotype machines may have access to matrices of such available type faces and sizes as are not included in their own Monotype matrix equipment, and which may be rented at a nominal charge. The Library is of particular value to owners of the Monotype Type-&-Rule Caster, in that through it they will have access to a large assortment of matrices.

The Matrix Library has been a feature of Monotype service for more than twenty-five years. It contains matrices for casting most of the faces shown in the Monotype Specimen Book in sizes up to 36 point. There are now

See Inside Pages of this Folder for the Strip Rules

MORE THAN 350 TYPE FACES AVAILABLE

Newspaper Advertising Will Aid You

Baskerville, No. 353-6 to 36 Point

Production Increased by Using Monotypes

Baskerville Italic, No. 3531-6 to 36 Point

Single Type Offers Better Results

Cheltenham Bold, No. 453-8 to 36 Point

Type Shortage Is a Severe Handicap

Bodoni, No. 375-6 to 36 Point

Monotypes Make a Clear Sharp Face

Bodoni Italic, No. 3751-6 to 36 Point

Large Variety of Good Type Faces

Bodoni Bold, No. 275-6 to 36 Point

Sort up All Your Empty Type Cases

Bodoni Bold Italic, No. 2751-6 to 36 Point

Condensed Faces Are Effective In Display

Bodoni Bold Condensed, No. 775-14 to 36 Point

Make Ad Work a Pleasure

Ultra Bodoni, No. 675-6 to 36 Point

Plenty of Leads and Slugs

Ultra Bodoni Italic, No. 6751-6 to 36 Point

Monotype Popularity Continues

Bookman Old Style, No. 98-6 to 36 Point

For the Progressive Printer

Bookman Old Style Italic, No. 981-6 to 36 Point

The Lowest Column and Page Costs

Caslon Old Style, No. 337-7 to 36 Point

Decorative Material on the Type Caster

Caslon Old Style Italic, No. 3371-7 to 36 Point

Every Type Cast Separately

Caslon Bold, No. 79-3 to 36 Point

Superior Type and Material

Caslon Bold Italic, No. 791-6 to 36 Point

Typography Sells All Products

Century Bold, No. 118-5½ to 36 Point

The Best Kind of Originality

Century Bold Italic, No. 1181-6 to 36 Point

Monotype Products Are Always New

Cheltenham Old Style, No. 64-6 to 36 Point

New Type Attracts More Business

Cheltenham Old Style Italic, No. 641-6 to 36 Point

Popular Cheltenham Bold Face

Cheltenham Bold, No. 86-5 to 36 Point

The Better Kind of Originality

Cheltenham Bold Italic, No. 861-5 to 36 Point

No Other System Meets Requirements

Cheltenham Bold Condensed, No. 88-5 to 36 Point

One of the Popular Cheltenham Faces

Cheltenham Bold Condensed Italic, No. 881-6 to 36 Point

Most Efficient Producer for the Shrewd Printer

Cheltenham Bold Extra Condensed, No. 141-6 to 36 Point

Use Type Having Good Reading Qualities

Cholier Old Style, No. 395-14 to 36 Point

Buyers of Good Printing Demand Monotype

Cholier Old Style Italic, No. 3951-14 to 36 Point

Monotype Furnishes Good Type Faces

Cholier Bold, No. 295-6 to 36 Point

Advantage of the Standard Matrix Line

Cholier Bold Italic, No. 2951-6 to 36 Point

Customers Like the Monotypes

Cochin Old Style, No. 61-6 to 36 Point

All Type Faces You May Require

Cochin Old Style Italic, No. 611-6 to 36 Point

Larger Production Schedule

Cochin Bold, No. 616-6 to 36 Point

Prepare for All Kinds of Jobs

Cochin Bold Italic, No. 6161-6 to 36 Point

Any Type Case Quickly Renewed

Cooper Old Style, No. 482-8 to 36 Point

All Display Mats Available

Cooper Black, No. 282-8 to 36 Point

Utmost Efficiency Offered By Monotype

Deeplene, No. 315-6 to 36 Point

The Modern Shop Requires Modern Equipment

Deeplene Italic, No. 3151-6 to 36 Point

Fine Work Pays Largest Dividends

Deeplene Bold, No. 317-6 to 36 Point

Single Type is the Keynote of Economy

Deeplene Bold Italic, No. 3171-6 to 36 Point

Some Typical Pop

All Type Faces cut for the sizes up to and including be cast on the Monotype Caster. These include the fifty Roman, Italic, Bold Outline Faces, Initial Letter page are shown single-line some of the popular series the Type-&-Rule Caster in

SPECIMEN SHEETS SEN

Continuous Production

Garamond Bold, No. 348

New Type in Every Job

Garamond Bold Italic, No. 348

Use In Magazine And

Garamont, No. 248-6

Supplying Material for

Garamont Italic, No. 3481

Makes an Extra

Franklin Gothic, No. 110

A FINE DISPLAY FONT FOR SETTING

Jefferson Gothic, No. 127

Maintain Quality At Min

Tourist Gothic, No. 100

Rules and Cornerp

Goudy Old Style, No. 30

Composes Straight A

Goudy Old Style Italic, No.

Sort up Your Case

Goudy Bold, No. 79-3

Better Service to Y

Goudy Bold Italic, No. 29

Printers Like to U

Goudy Handtooled, No. 38

Good Type Faces to

Goudy Handtooled Italic, No.

TYPE FACES AVAILABLE ON THE MONOTYPE TYPE-&-

Appeals to More Business

Monotype Old Style Italic, No. 641—6 to 36 Point

Cheltenham Bold Face

Monotype Bold, No. 86—5 to 36 Point

Another Kind of Originality

Monotype Bold Italic, No. 861—5 to 36 Point

System Meets Requirements

Monotype Bold Condensed, No. 88—5 to 36 Point

Popular Cheltenham Faces

Monotype Bold Condensed Italic, No. 881—6 to 36 Point

Best Producer for the Shrewd Printer

Monotype Bold Extra Condensed, No. 141—6 to 36 Point

Having Good Reading Qualities

Monotype Old Style, No. 395—14 to 36 Point

Good Printing Demand Monotype

Monotype Old Style Italic, No. 3951—14 to 36 Point

Monotype Furnishes Good Type Faces

Monotype Bold, No. 295—6 to 36 Point

Part of the Standard Matrix Line

Monotype Bold Italic, No. 2951—6 to 36 Point

Printers Like the Monotypes

Monotype Old Style, No. 61—6 to 36 Point

Monotype Faces You May Require

Monotype Old Style Italic, No. 611—6 to 36 Point

Production Schedule

Monotype Bold, No. 616—6 to 36 Point

Monotype for All Kinds of Jobs

Monotype Bold Italic, No. 6161—6 to 36 Point

Monotype Case Quickly Renewed

Monotype Old Style, No. 482—8 to 36 Point

Monotype Mats Available

Monotype Paper Black, No. 282—8 to 36 Point

Efficiency Offered By Monotype

Monotype Deepdene, No. 315—6 to 36 Point

Monotype Shop Requires Modern Equipment

Monotype Bold Italic, No. 3151—6 to 36 Point

Monotype Pays Largest Dividends

Monotype Bold, No. 317—6 to 36 Point

Monotype is the Keypnote of Economy

Monotype Bold Italic, No. 3171—6 to 36 Point

Some Typical Popular Types

All Type Faces cut for the Monotype in sizes up to and including 36 point can be cast on the Monotype Type-&-Rule Caster. These include three hundred and fifty Roman, Italic, Bold, Gothic and Outline Faces, Initial Letters, etc. On this page are shown single-line specimens of some of the popular series for casting on the Type-&-Rule Caster in sizes indicated.

SPECIMEN SHEETS SENT ON REQUEST

Continuous Production, More Profits

Garamond Bold, No. 348—6 to 36 Point

New Type in Every Job Is a Real Delight

Garamond Bold Italic, No. 5481—6 to 36 Point

Use In Magazine And Book Printing

Garamont, No. 248—6 to 36 Point

Supplying Material for Modern Printers

Garamont Italic, No. 3481—6 to 36 Point

Makes an Extra Good Profit

Franklin Gothic, No. 107—4 to 36 Point

A FINE DISPLAY FONT FOR SETTING MODERNISTIC HEADINGS

Jefferson Gothic, No. 327—14 to 36 Point

Maintain Quality At Minimum Cost For Job

Tourist Gothic, No. 340—14 to 36 Point

Rules and Cornerpieces are Made

Goudy Old Style, No. 394—6 to 36 Point

Composes Straight And Intricate Jobs

Goudy Old Style Italic, No. 3941—6 to 36 Point

Sort up Your Cases for the Rush

Goudy Bold, No. 294—6 to 36 Point

Better Service to Your Customers

Goudy Bold Italic, No. 2941—6 to 36 Point

Printers Like to Use Monotype

Goudy Handtooled, No. 383—10 to 36 Point

Good Type Faces to Choose From

Goudy Handtooled Italic, No. 3831—10 to 36 Point

A Step in the Right Direction

Goudy Heavyface, No. 380—12 to 36 Point

Maintain Quality for Less

Goudy Heavyface Italic, No. 3801—14 to 36 Point

Improve Composition of Your Ads

Goudy Heavyface Condensed, No. 382—12 to 36 Point

Make-Ready Time Cut to a Minimum

Goudy Sans Light, No. 384—14 to 36 Point

Monotype Service Means Quick Service

Goudy Sans Light Italic, No. 3841—14 to 36 Point

Modern Equipment for Your Plants

Kennerley Old Style, No. 268—6 to 36 Point

Keep a Good Supply of Slugs on Hand

Kennerley Old Style Italic, No. 2681—6 to 36 Point

Kennerley Is Especially Desirable

Kennerley Bold, No. 269—6 to 36 Point

Is Extremely Legible And Clear

Kennerley Bold Italic, No. 2691—6 to 36 Point

New Faces Will Attract New Orders

Nicolas Cochon, No. 461—14 to 36 Point

Side Heads May Differ from the Text

Sans Serif Light, No. 329—6 to 36 Point

No Limit to Number of Characters Used

Sans Serif Light Italic, No. 3291—6 to 36 Point

Specify Monotype and Receive High Quality Work

Sans Serif Light Condensed, No. 337—14 to 36 Point

Monotype Sets Solid or Leaded Type

Sans Serif Bold, No. 330—6 to 36 Point

For a Greater Production at Less Cost

Sans Serif Bold Italic, No. 3301—6 to 36 Point

Editions on Time; Advertisers Pleased

Sans Serif Medium, No. 331—6 to 36 Point

Useful For Setting Modern Ad And Job Work

Sans Serif Medium Condensed, No. 334—14 to 36 Point

New Slugs Make Better Forms

Sans Serif Extrabold, No. 332—6 to 36 Point

A Good Italic for Display Lines

Sans Serif Extrabold Italic, No. 3321—8 to 36 Point

ON THE MONOTYPE TYPE-&-RULE CASTER

Popular Types

for the Monotype in
cluding 36 point can
Monotype Type-&-Rule
e three hundred and
t, Bold, Gothic and
al Letters, etc. On this
ngle-line specimens of
er series for casting on
aster in sizes indicated.

SENT ON REQUEST

uction, More Profits

No. 548 - 6 to 36 Point

Job Is a Real Delight

No. 5481 - 6 to 36 Point

And Book Printing

245 - 6 to 36 Point

l for Modern Printers

No. 2481 - 6 to 36 Point

tra Good Profit

No. 107 - 4 to 36 Point

SETTING MODERNISTIC HEADINGS

No. 227 - 14 to 36 Point

Minimum Cost For Job

No. 140 - 14 to 36 Point

erpieces are Made

No. 394 - 6 to 36 Point

at And Intricate Jobs

No. 3941 - 6 to 36 Point

Cases for the Rush

No. 294 - 6 to 36 Point

o Your Customers

No. 2941 - 6 to 36 Point

to Use Monotype

No. 383 - 10 to 36 Point

es to Choose From

No. 3831 - 10 to 36 Point

A Step in the Right Direction

Goudy Heavyface, No. 380 - 12 to 36 Point

Maintain Quality for Less

Goudy Heavyface Italic, No. 3801 - 14 to 36 Point

Improve Composition of Your Ads

Goudy Heavyface Condensed, No. 382 - 12 to 36 Point

Make-Ready Time Cut to a Minimum

Goudy Sans Light, No. 384 - 14 to 36 Point

Monotype Service Means Quick Service

Goudy Sans Light Italic, No. 3841 - 14 to 36 Point

Modern Equipment for Your Plants

Kennerley Old Style, No. 268 - 6 to 36 Point

Keep a Good Supply of Slugs on Hand

Kennerley Old Style Italic, No. 2681 - 6 to 36 Point

Kennerley Is Especially Desirable

Kennerley Bold, No. 269 - 6 to 36 Point

Is Extremely Legible And Clear

Kennerley Bold Italic, No. 2691 - 6 to 36 Point

New Faces Will Attract New Orders

Nicolas Cochlin, No. 461 - 14 to 36 Point

Side Heads May Differ from the Text

Sans Serif Light, No. 329 - 6 to 36 Point

No Limit to Number of Characters Used

Sans Serif Light Italic, No. 3291 - 6 to 36 Point

Specify Monotype and Receive High Quality Work

Sans Serif Light Condensed, No. 337 - 14 to 36 Point

Monotype Sets Solid or Leaded Type

Sans Serif Bold, No. 330 - 6 to 36 Point

For a Greater Production at Less Cost

Sans Serif Bold Italic, No. 3301 - 6 to 36 Point

Editions on Time; Advertisers Pleased

Sans Serif Medium, No. 331 - 6 to 36 Point

Useful For Setting Modern Ad And Job Work

Sans Serif Medium Condensed, No. 334 - 14 to 36 Point

New Slugs Make Better Forms

Sans Serif Extrabold, No. 332 - 6 to 36 Point

A Good Italic for Display Lines

Sans Serif Extrabold Italic, No. 3321 - 8 to 36 Point

Precision Base For Mounting Your Cuts

Sans Serif Extrabold Condensed, No. 333 - 14 to 36 Point

FAST IN OPERATION

Sans Serif Lined, No. 430 - 24 to 36 Point

Many New Faces to Select From

Stymie Light, No. 190 - 6 to 36 Point

Versatility a Monotype Feature

Stymie Light Italic, No. 1901 - 6 to 36 Point

Non-Distribution Saves Money

Stymie Medium, No. 290 - 6 to 36 Point

New Type Means Clean Type

Stymie Medium Italic, No. 2901 - 6 to 36 Point

New Type Greatly Reduces Pressroom Expenses

Stymie Medium Condensed, No. 290 - 14 to 36 Point

Overhead Greatly Reduced

Stymie Bold, No. 189 - 6 to 36 Point

Better Advertising Sells Well

Stymie Bold Italic, No. 1891 - 14 to 36 Point

An Economical Proposition

Stymie Extrabold, No. 390 - 6 to 36 Point

A Better Bold Face Italic

Stymie Extrabold Italic, No. 3901 - 6 to 36 Point

Condensed Type For Narrow Measures

Stymie Extrabold Condensed, No. 490 - 14 to 36 Point

Twentieth Century Is Now Available

Twentieth Century Light, No. 605 - 6 to 36 Point

Display Type Faces For The Composer

Twentieth Century Light Italic, No. 6051 - 6 to 36 Point

Printers Like This Popular Sans Letter

Twentieth Century Medium, No. 605 - 6 to 36 Point

Ornaments Are Cast In Various Sizes

Twentieth Century Medium Italic, No. 6051 - 6 to 36 Point

Good Printing Will Attract Big Profit

Twentieth Century Bold, No. 604 - 6 to 36 Point

A Bold Face Appropriate for Ads

Twentieth Century Extrabold, No. 603 - 6 to 36 Point

This Modern Letter Will Be Found Useful For Heads

Twentieth Century Bold Condensed, No. 607 - 6 to 36 Point

RULES IN CONTINUOUS STRIPS OR AUTOMA

1¼-10RL
1¼-30RL
1¼-40RL
2-10RL
2-11RL
2-18RL
2-20RL
2-21RL
2-28RL
2-30RL
2-31RL
2-35RL
2-350RL
2-38RL
2-40RL
2-41RL
2-45RL
2-50RL
2-100RL
3-10RL
3-11RL
3-18RL
3-20RL
3-21RL
3-248RL
3-30RL
3-31RL
3-3428RL
3-40RL
3-41RL
3-410RL
3-50RL

3-51RL
3-61RL
3-65RL
4-10RL
4-20RL
4-248RL
4-30RL
4-31RL
4-348RL
4-161RL
4-40RL
4-428RL
4-441RL
4-5318RL
4-60RL
4-85RL
6-10RL
6-210RL
6-11RLS
6-11RL
6-15RL
6-18RL
6-18RLS
6-1371RL
6-1418RL
6-1618RL
6-1751RL
6-181RL
6-1421RL
6-1441RL
6-147RL
6-137RL

6-655RL
6-1370RL
6-1367RL
6-1253RL
6-1458RL
6-1571RL
6-208RL
6-21RL
6-228RL
6-248RL
6-2425RL
6-30RL
6-31RL
6-326RL
6-328RL
6-155RL
6-348RL
6-368RL
6-350RL
6-3481RL
6-3517RL
6-3531RL
6-3537RL
6-3538RL
6-3562RL
6-3581RL
6-357RL
6-367RL
6-371RL
6-381RL
6-388RL
6-40RL
6-41RL

Leads and Slugs,
 Leads and Slugs in all sizes from
 and cut-mounting, can be made
 Rule Caster in continuous strip
 cut to any desired measure. The
 used for making Leads and Sl
 can be equipped to make strip

6-410RL
6-48RL
6-411RL
6-4225RL
6-4245RL
6-428RL
6-4281RL
6-448RL
6-4411RL
6-4481RL
6-4611RL
6-47RL
6-517RL
6-50RL
6-51RL
6-5318RL
6-5331RL
6-5418RL
6-5618RL
6-581RL
6-60RL
6-61RL
6-610RL
6-620RL
6-6215
6-6318
6-6481
6-6668
6-6888
6-7581
6-9018
6-9418
6-9441
6-968
6-918
6-9211
6-9381
6-958
6-9718
6-1401
6-4361
6-6311
6-4381
6-3281
6-3637
6-4571
6-5481
8-108

STRIPS OR AUTOMATICALLY CUT TO LABOR-SAVING

Leads and Slugs, 1½ to 12 Point

Leads and Slugs in all sizes from 1½ to 12 point, for spacing and cut-mounting, can be made on the Monotype Type-&-Rule Caster in continuous strips or automatically delivered cut to any desired measure. The molds for making Rules are used for making Leads and Slugs .868 inch in height, and can be equipped to make strip material of any other height.

6-410RL
6-48RL
6-411RL
6-425RL
6-4245RL
6-428RL
6-4281RL
6-448RL
6-4411RL
6-4481RL
6-4611RL
6-47RL
6-517RL
6-50RL
6-51RL
6-5318RL
6-5311RL
6-5418RL
6-5618RL
6-581RL
6-60RL
6-61RL
6-610RL
6-620RL

6-671RL
6-653RL
6-648RL
6-6468RL
6-68RL
6-738RL
6-86RL
6-81RL
6-844RL
6-90RL
6-91RL
6-921RL
6-938RL
6-95RL
6-372RL
6-1461RL
6-4361RL
6-6331RL
6-4381RL
6-3281RL
6-3627RL
6-451RL
6-548RL
8-10RL

8-9251RL
8-990RL
8-22RLS
8-40RL
8-18RL
9-10RL
9-850RL
10-10RL
10-30RL
10-18RL
10-30RL
10-870RL
12-45RL
12-252RL
12-451RL
12-2321RL
12-5318RL
12-890RLX
12-15RL

12-2542RL
12-3413RL
12-30RL
12-18RL
12-30RL
12-40RL
12-1467RL
12-6321RL
12-4984RL
12-9952RL
12-5458RL
12-96RL
12-9646RL
12-864RL
12-9674RL
12-144RL
12-164RL
12-3525RL
12-3556RL
12-424RL
12-4251RL
12-4261RL
12-4271RL
12-4361RL

OMATICALLY CUT TO LABOR-SAVING LENGTHS

s, 1½ to 12 Point

from 1½ to 12 point, for spacing
made on the Monotype Type-&-
trips or automatically delivered
The molds for making Rules are
Slugs .868 inch in height, and
trip material of any other height.

621 RL	8-9251 RL
633 RL	8-990 RL
645 RL	8-22 RL S
646 RL	8-40 RL
656 RL	8-18 RL
675 RL	9-10 RL
680 RL	9-850 RL
684 RL	10-10 RL
696 RL	10-20 RL
699 RL	10-18 RL
703 RL	10-30 RL
709 RL	10-870 RL
732 RL	12-45 RL
744 RL	12-232 RL
746 RL	12-451 RL
748 RL	12-451 RL
752 RL	12-2321 RL
762 RL	12-5318 RL
767 RL	12-830 RL X
781 RL	12-15 RL
784 RL	
8-10 RL	

12-2542 RL
12-3413 RL
12-10 RL
12-18 RL
12-30 RL
12-40 RL
12-1467 RL
12-6321 RL
12-4984 RL
12-9952 RL
12-5458 RL
12-96 RL
12-9646 RL
12-864 RL
12-9674 RL
12-144 RL
12-164 RL
12-3825 RL
12-3556 RL
12-424 RL
12-4251 RL
12-4261 RL
12-4271 RL
12-4361 RL

12-4471 RL
12-446 RL
12-4469 RL
12-6351 RL
12-4588 RL
12-4481 RL
12-556 RL
12-611 RL
12-626 RL
12-827 RL
12-657 RL
12-661 RL
12-6471 RL
12-4781 RL
12-4441 RL
12-740 RL
12-831 RL
12-861 RL
12-881 RL
12-8278 RL
12-5338 RL
12-662 RL
12-961 RL
12-9437 RL

12-9504 RL
12-9676 RL
12-8643 RL
12-8642 RL

Special Column Rules

These Rule Matrices are 0.065" drive
for use on Special Column Rule Mold

3119-11 RL
3119-20 RL
4119-20 RL
5119-20 RL
6119-20 RL
6119-40 RL
6119-11 RL
6119-51 RL
6119-41 RL
6119-30 RL
6119-61 RL
6119-31 RL
6119-81 RL
6119-50 RL
6119-21 RL
8119-20 RL
9119-10 RL
10119-10 RL
10119-15 RL
10119-20 RL
12119-20 RL



THE MONOTYPE SYSTEM

EMBRACES machine typesetting, the making of type, strip material and metal furniture, and their use, either singly or in combination, in the production of type pages, the make-up and imposition of type forms, the mounting of cuts and, finally, non-distribution. Each element of the Monotype System is complete in itself and in its application to the work for which it was designed, and each element may be combined with any other or with all other elements to meet fully the requirements of any composing room.

Machine Typesetting

The Monotype Typesetting Machine sets type in all measures up to 60 picas in all sizes from 4 to 18 point. Straight matter, tabular and intricate work, ruled forms, rule-and-figure work—in fact, all kinds of typesetting—are done with unequalled facility and speed. No other machine embodies within the scope of its operation so wide a range of typesetting, such versatility in its product, nor contributes so much to the improvement of typography and printing.

Hand Composition

Under the Monotype System, new type, decorative material, rules, leads, slugs and metal furniture are provided in unlimited supply for use in hand composition, and at a cost so low that non-distribution becomes an economy as well as a convenience. Under these conditions the highest possible efficiency prevails and low production costs inevitably follow. New Monotype-cast type reduces make-ready time and assures the very highest quality of printing. Monotype type faces have bettered the appearance of printed matter wherever they are used.

Make-up and Imposition

In the make-up of pages and in the imposition of forms, the hollow metal furniture and the slugs and leads provided by the Monotype System are of inestimable value. This material, cast in any desired length, is "precision" material in every sense of the word—being absolutely accurate in height and point size. It is available in whatever quantity needed, in strips of any length or automatically delivered cut to labor-saving sizes, ready for immediate use when needed.

Mounting of Cuts

The Monotype Method of Cut-Mounting involves the use of spacing material as base for mounting halftones, zinc etchings and electrotypes, either temporarily for proofing or plating, or permanently for printing direct from type forms. This base is available in a variety of forms for different uses: Monotype machine-cast quads from 4 to 36 point, Monotype leads and slugs from 1 to 18 point, and Monotype Giant Caster Furniture from 14 to 72 point—all absolutely accurate in both height and point size for the mounting of cuts to the desired height.

LANSTON MONOTYPE MACHINE COMPANY

Monotype Building Twenty-fourth and Locust Streets Philadelphia 3, Penna.