

Superior Jobbing
Type
Leading Styles

American Type Founders' Co

**Mackellar,
Smiths &
Jordan ..
Branch..**

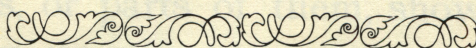
Philadelphia . . .

Book and News
FACES
Durable Material

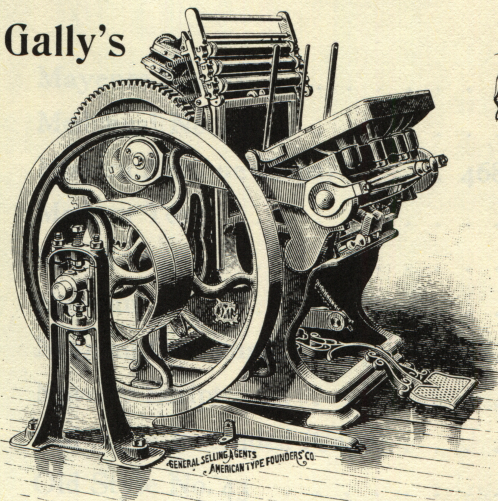
Selling
Agents

For . .

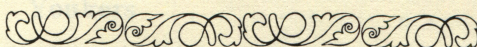
Cottrell's
Stop Cylinder
Presses



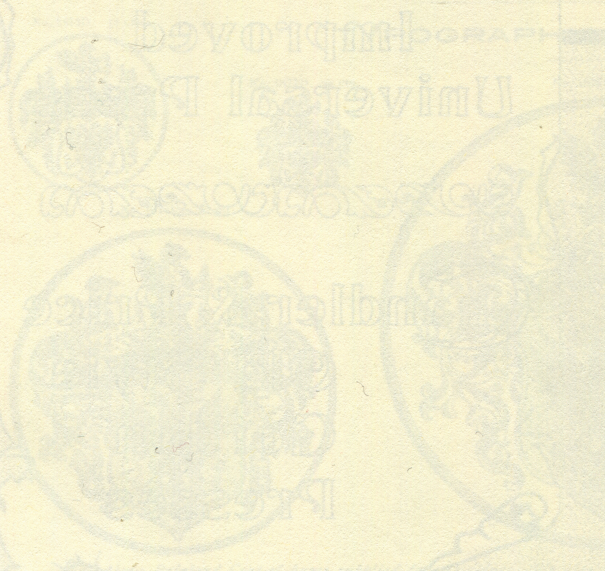
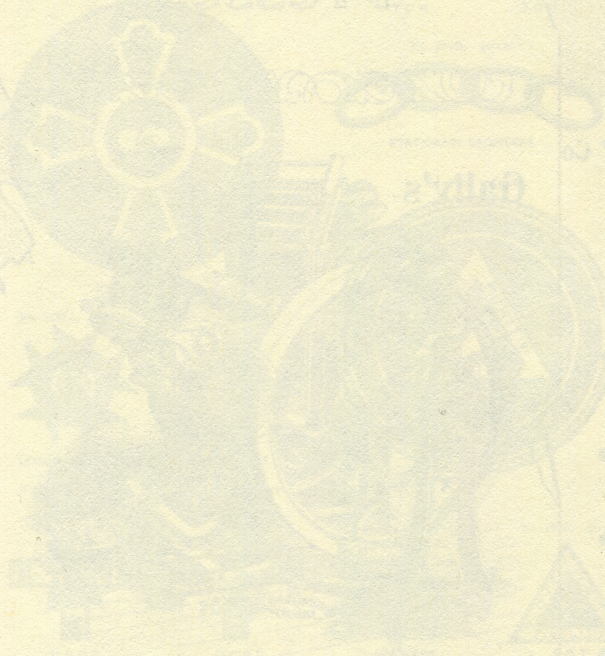
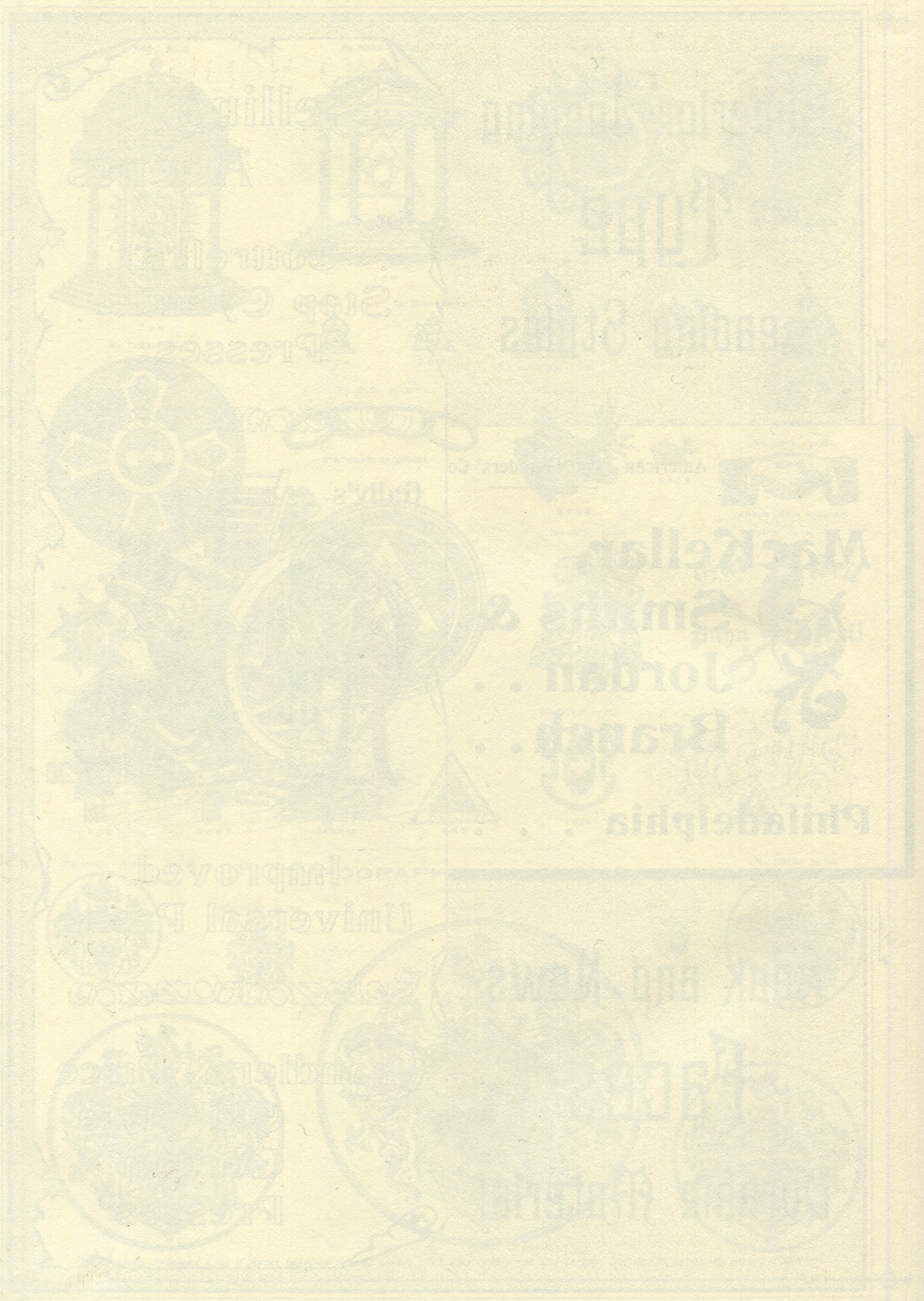
Gally's



Improved
Universal Press



Chandler & Price
Old Style
Gordon
Presses



Philadelphia
Branch
Jordan & Smith
Mackellar
Stop
Presses
Improved

Universal
Branch
Jordan & Smith
Mackellar
Philadelphia

Brass Type for Bookbinders

Brass Type, Borders and Ornaments



A special Specimen Book of Brass Type will be sent on application. The following series, or parts of them, shown in this Specimen Book, are made in Solid Brass:

	PAGE		PAGE
Antique Condensed No. 45 (Caps)	143	Mayence (Caps)	417
Art Gothic	352	Mediæval No. 40	557
Atlanta	424	Modern Antique (Caps)	468, 469
Baskerville (Caps)	186	Modern Text	561
Bremen	315	Mural	372
Celtic No. 42	180	Norman	324
Extra Condensed No. 45 (Caps)	125	Norman Condensed	324
Facade	373	Novelty Script	232
French Old Style No. 2	113, 114	Old Style Extended (Caps)	111
Gothic Condensed No. 44 (Caps)	152	Old Style No. 43	121
Hogarth (Caps)	467	Old Style No. 44	121
Lafayette (Caps)	462	Rococo (Caps)	447
Latin Antique No. 40 (Caps)	185	Templar (Caps)	457
Lightface Condensed	127, 128	Victoria	459
Lightface No. 44	131	Yonkers	555
Makart (Caps)	457		

Also a Collection of Forty-five Beautiful Borders and
Thirty-nine Word Ornaments

Thorne Type-Setting

AND Distributing Machine

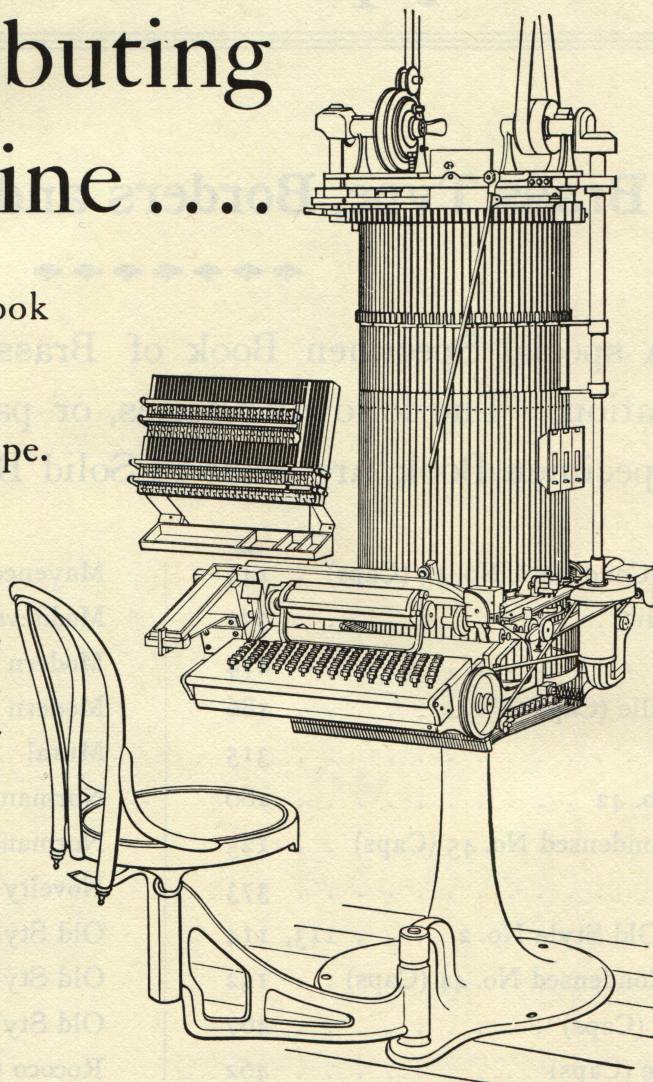
Hundreds in use by leading Book
Printers and Newspaper Pub-
lishers in the United States,
Canada, Great Britain and Europe.

THE THORNE is the only
type-setting machine which
distributes its own type. The
two operations may be per-
formed simultaneously, or
separately, as desired.

THE THORNE occupies very
little space, runs easily and
noiselessly, and is operated
with slight exertion. It is
simple in its mechanism and
processes and very durable.

THE THORNE reduces the cost of composition one-half, while the
quality of the work equals best hand type-setting.

THE THORNE is the only type-setting machine that has proved
successful during a long period of years. Dozens of other experi-
mental machines have been tried—the Thorne alone has stood the
test of time.



THORNE TYPE-SETTING MACHINE CO.

Hartford, Conn.

New York: 34 Park Row.

Chicago: 139 Monroe St.

London: 2 Copthall Building.

Nicked Type for Type-Setting Machines

Cast in Copper-Alloy
Metal, the lightest and
most durable made

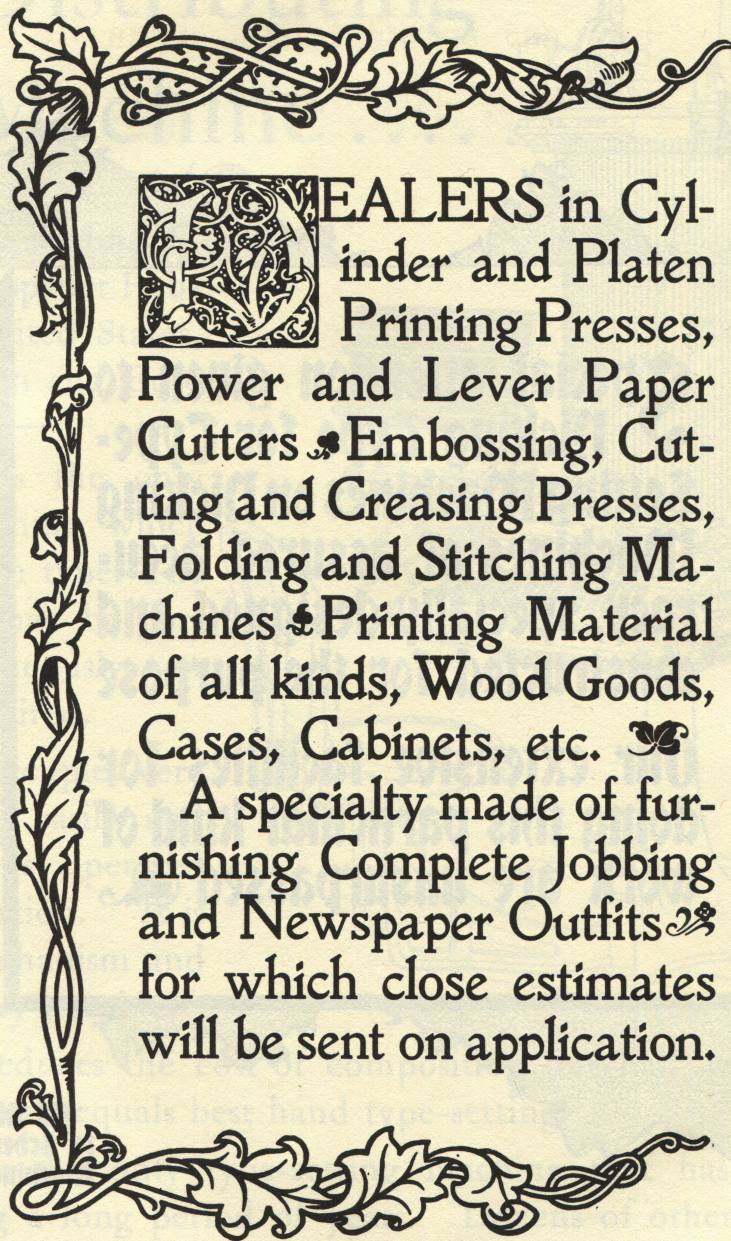
Special attention given to
Nicking Type for Type-
Setting Machines on Nicking
Machines of assured accu-
racy, specially designed and
constructed for the purpose

Our extensive facilities for
doing this particular kind of
work are unsurpassed

All Nicked Type put up
to Schemes adapted for
Machine Composition

American
Type Founders Company

Everything for the Printer kept in stock by the
American Type Founders Co., Philadelphia




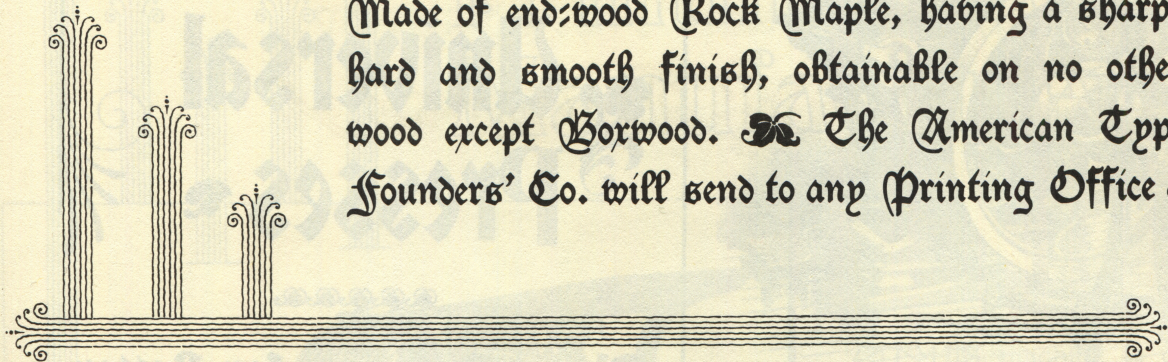
DEALERS in Cylinder and Platen Printing Presses, Power and Lever Paper Cutters, Embossing, Cutting and Creasing Presses, Folding and Stitching Machines, Printing Material of all kinds, Wood Goods, Cases, Cabinets, etc.

A specialty made of furnishing Complete Jobbing and Newspaper Outfits for which close estimates will be sent on application.

A Specialty: Self-Spacing Type, which can be set twenty-five per cent. faster than ordinary body type

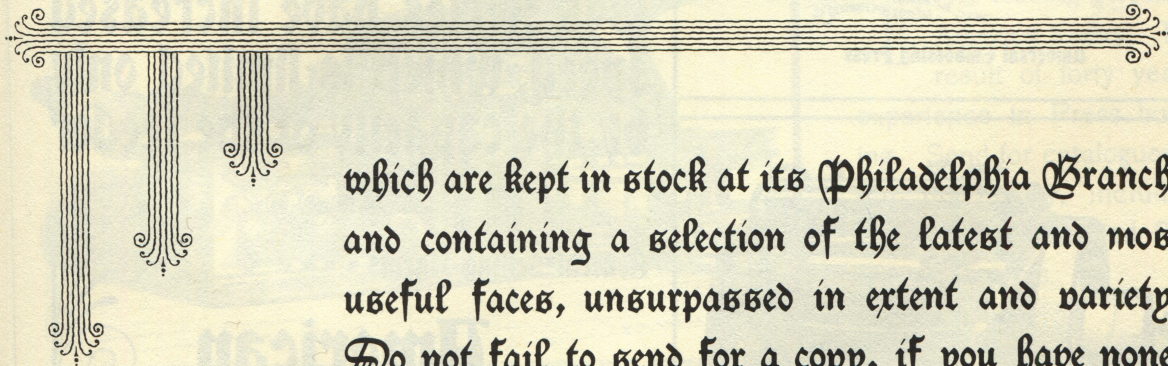
Wood Type

Made of end-wood Rock Maple, having a sharp, hard and smooth finish, obtainable on no other wood except Boxwood.  The American Type Founders' Co. will send to any Printing Office a




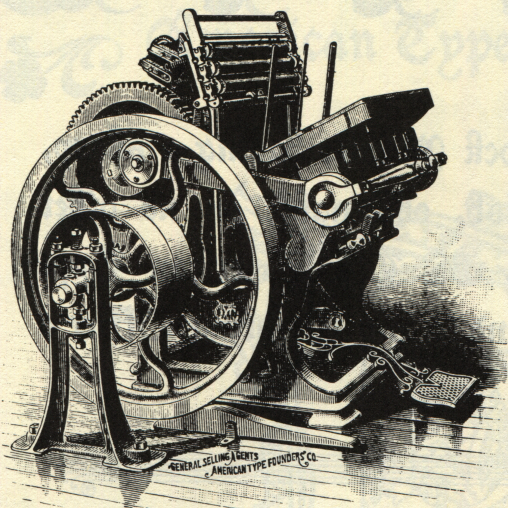
Complete . .
Specimen Book
. . Showing

Wood Type Borders and Ornaments

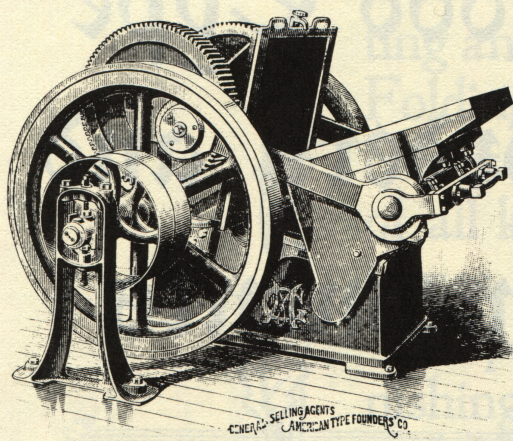


which are kept in stock at its Philadelphia Branch, and containing a selection of the latest and most useful faces, unsurpassed in extent and variety. Do not fail to send for a copy, if you have none.

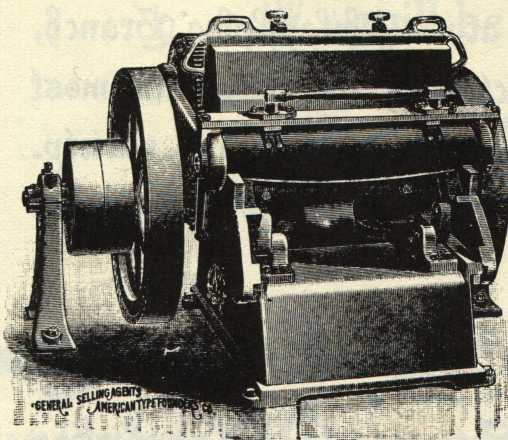
American Type Founders Company
 Nos. 606-614 Sansom Street, Philadelphia



Universal Printing Press



Universal Embossing Press



Universal Paper-Box Cutting and Creasing Press

Gally Universal Presses

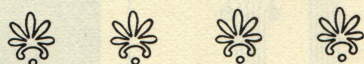
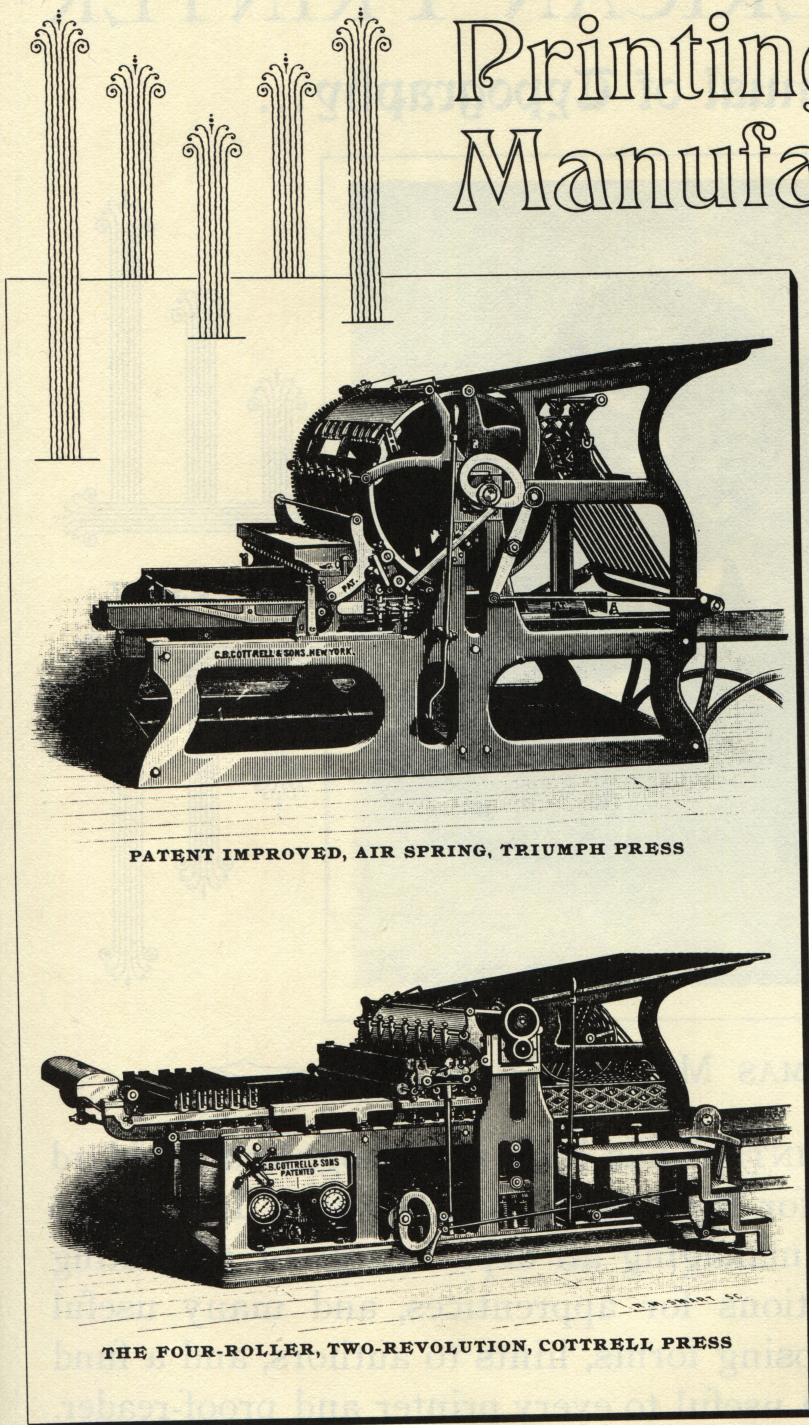
These Presses, for Letter-press Printing, hot or cold Embossing, and Paper Box Cutting and Creasing, have been acknowledged leaders for twenty-five years. Perfect in principle and construction, they do perfect work. The Presses of the 1895 Series have increased speed, which is limited only by the capacity of the feeder

General Selling Agents

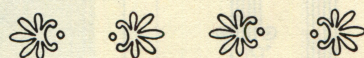
American Type Founders Company

C. B. Cottrell & Sons Co.

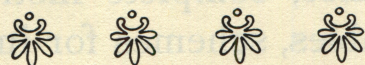
Printing Press Manufacturers



THIS machine is our latest production, and is suited to the wants of the all-round printer, being suitable for a country newspaper or small city office. It is thoroughly well built, has air springs and all improvements.



THE leading Press of America to-day. The result of forty years' experience in Press building. Send for catalogues of our machinery, including Rotary and Flat Bed Perfecting Presses.



C. B. COTTRELL & SONS CO.

MANUFACTORY
WESTERLY, R. I.

41 PARK ROW, NEW YORK. 397 DEARBORN ST., CHICAGO
174 FORT HILL SQUARE, BOSTON

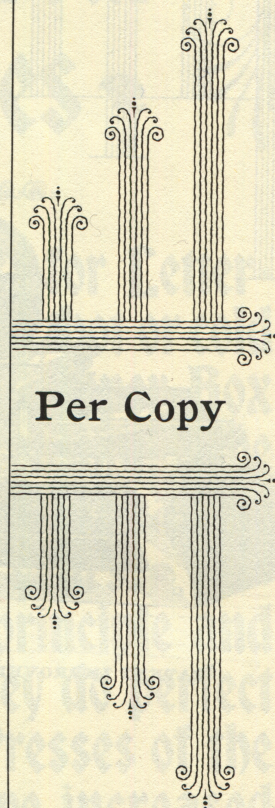
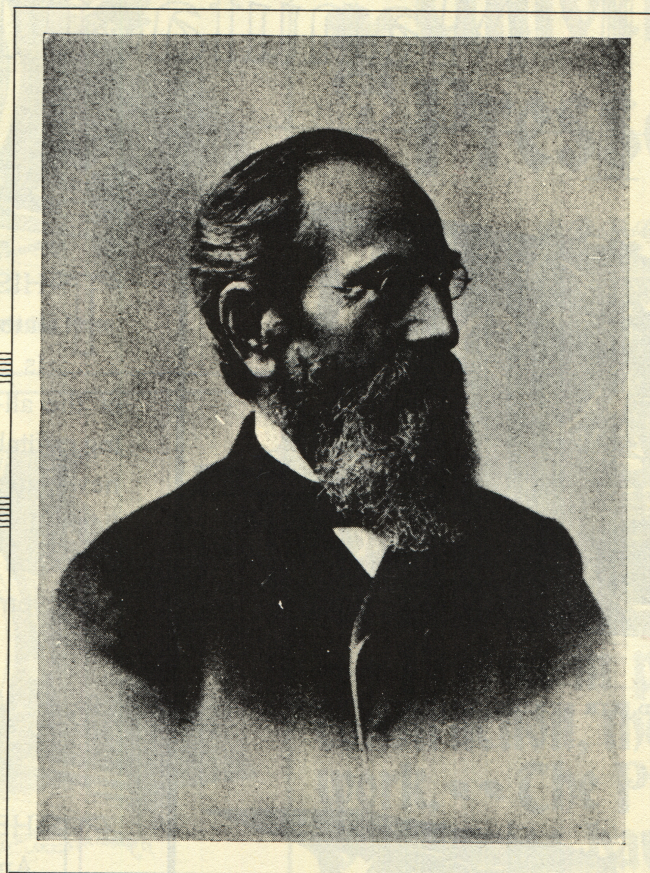
A NECESSITY IN THE PRINTING OFFICE

THE AMERICAN PRINTER

...A Manual of Typography...



Price, \$2.00



Per Copy

By THOMAS MACKELLAR, PH. D.

THE "AMERICAN PRINTER" has been the recognized standard book of reference for Printers for many years. It contains practical directions for managing all departments of a printing office, complete instructions for apprentices, and many useful tables, schemes for imposing forms, hints to authors, and a fund of technical information useful to every printer and proof-reader.

Published by

American Type Founders Co.

FOR SALE AT ALL BRANCHES