

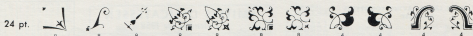
# ATF Type Division

## Fonted Ornaments and Typographic Accessories

### Adstyle Figures Small figure shows how many a font contains

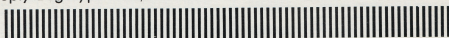


### Bradley Combination Ornaments Figure under each unit shows how many of each a font contains



### Business Reply Logotypes Complete fonts shown

Font A



Font B



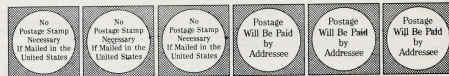
Font C



Font D



Font E



AMERICAN TYPE FOUNDERS COMPANY  
 TYPE DIVISION

200 ELMORA AVENUE, ELIZABETH, NEW JERSEY 07202 PHONE 201-353-1000

One of the White Consolidated Industries



# Cheltenham Perpetual Calendars

18 pt. No. 1802

These Calendars are perpetual and may be used year after year, with no extra expense, by simply rearranging the figures and the months

1932		JANUARY						1932	
SUN	MON	TUE	WED	THU	FRI	SAT			
					1	2			
3	4	5	6	7	8	9			
10	11	12	13	14	15	16			
17	18	19	20	21	22	23			
24	31	25	26	27	28	29	30		

## Miniature Perpetual Calendar Logotypes

HOW THESE LABOR-SAVING LOGOTYPES ARE USED

A font of ATF Miniature Perpetual Calendar Logotypes contains logotypes in which each month of the year and one-letter abbreviations of the days of the week are cast in a single unit measuring 42x12 points. Figure logotypes are included for 28, 29, 30 and 31 day months beginning on each day of the week. Six-line figure logotypes are cast in units measuring 42x24 points, while five-line units measure 42x20 points. Dotted blanks, cast on a unit 42x24 points, make it easy to even up the number of lines whenever necessary.

To facilitate the composition of vertical calendars, each font includes logotypes in which three-letter abbreviations of the days of the week are cast in a unit measuring 42x12 points, three-letter abbreviations of the months on 18x24 point logotypes and single figures are provided for setting the years.

Each font contains sufficient material to set two full years in either of the styles shown.

JANUARY  
S M T W T F S  
1  
2 3 4 5 6 7  
8 9 10 11 12 13  
14 15 16 17 18 19 20  
21 22 23 24 25 26 27 28 29 30 31

FEBRUARY  
S M T W T F S  
1  
2 3 4 5 6 7 8  
9 10 11 12 13 14 15  
16 17 18 19 20 21 22 23 24 25 26 27 28

JAN TO DEC  
12/16/18/19

SMITH'S DELICATESSEN  
Calendar for 1958

JANUARY	FEBRUARY	MARCH	APRIL
S M T W T F S 1 2 3 4 5 6 7 8 9 10 11 12 13 14 15 16 17 18 19 20 21 22 23 24 25 26 27 28 29 30 31	S M T W T F S 1 2 3 4 5 6 7 8 9 10 11 12 13 14 15 16 17 18 19 20 21 22 23 24 25 26 27 28 29	S M T W T F S 1 2 3 4 5 6 7 8 9 10 11 12 13 14 15 16 17 18 19 20 21 22 23 24 25 26 27 28 29 30 31	S M T W T F S 1 2 3 4 5 6 7 8 9 10 11 12 13 14 15 16 17 18 19 20 21 22 23 24 25 26 27 28 29 30
MAY	JUNE	JULY	AUGUST
S M T W T F S 1 2 3 4 5 6 7 8 9 10 11 12 13 14 15 16 17 18 19 20 21 22 23 24 25 26 27 28 29 30 31	S M T W T F S 1 2 3 4 5 6 7 8 9 10 11 12 13 14 15 16 17 18 19 20 21 22 23 24 25 26 27 28 29 30 31	S M T W T F S 1 2 3 4 5 6 7 8 9 10 11 12 13 14 15 16 17 18 19 20 21 22 23 24 25 26 27 28 29 30 31	S M T W T F S 1 2 3 4 5 6 7 8 9 10 11 12 13 14 15 16 17 18 19 20 21 22 23 24 25 26 27 28 29 30 31
SEPTEMBER	OCTOBER	NOVEMBER	DECEMBER
S M T W T F S 1 2 3 4 5 6 7 8 9 10 11 12 13 14 15 16 17 18 19 20 21 22 23 24 25 26 27 28 29 30	S M T W T F S 1 2 3 4 5 6 7 8 9 10 11 12 13 14 15 16 17 18 19 20 21 22 23 24 25 26 27 28 29 30 31	S M T W T F S 1 2 3 4 5 6 7 8 9 10 11 12 13 14 15 16 17 18 19 20 21 22 23 24 25 26 27 28 29 30	S M T W T F S 1 2 3 4 5 6 7 8 9 10 11 12 13 14 15 16 17 18 19 20 21 22 23 24 25 26 27 28 29 30 31

TEXAS TRUST COMPANY

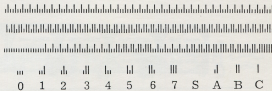
JAN 1 2 3 4 5 6 7 8 9 10 11 12 13 14 15 16 17 18 19 20 21 22 23 24 25 26 27 28 29 30 31	FEB 1 2 3 4 5 6 7 8 9 10 11 12 13 14 15 16 17 18 19 20 21 22 23 24 25 26 27 28 29	MAR 1 2 3 4 5 6 7 8 9 10 11 12 13 14 15 16 17 18 19 20 21 22 23 24 25 26 27 28 29 30 31	APR 1 2 3 4 5 6 7 8 9 10 11 12 13 14 15 16 17 18 19 20 21 22 23 24 25 26 27 28 29 30	MAY 1 2 3 4 5 6 7 8 9 10 11 12 13 14 15 16 17 18 19 20 21 22 23 24 25 26 27 28 29 30 31	JUN 1 2 3 4 5 6 7 8 9 10 11 12 13 14 15 16 17 18 19 20 21 22 23 24 25 26 27 28 29 30	JUL 1 2 3 4 5 6 7 8 9 10 11 12 13 14 15 16 17 18 19 20 21 22 23 24 25 26 27 28 29 30 31	AUG 1 2 3 4 5 6 7 8 9 10 11 12 13 14 15 16 17 18 19 20 21 22 23 24 25 26 27 28 29 30	SEP 1 2 3 4 5 6 7 8 9 10 11 12 13 14 15 16 17 18 19 20 21 22 23 24 25 26 27 28 29 30	OCT 1 2 3 4 5 6 7 8 9 10 11 12 13 14 15 16 17 18 19 20 21 22 23 24 25 26 27 28 29 30 31	NOV 1 2 3 4 5 6 7 8 9 10 11 12 13 14 15 16 17 18 19 20 21 22 23 24 25 26 27 28 29 30	DEC 1 2 3 4 5 6 7 8 9 10 11 12 13 14 15 16 17 18 19 20 21 22 23 24 25 26 27 28 29 30 31
---	---	---	--	---	--	---	--	--	---	--	---

## Diagonals Complete 12 pt. font shown

- 6 pt. 30 pt.
- 8 pt. 36 pt.
- 10 pt. 42 pt.
- 12 pt. 48 pt.
- 14 pt. 60 pt.
- 18 pt. 72 pt.
- 24 pt.



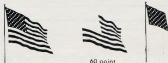
## U. S. Postal Service Bar Code System



## United States Flag Typecuts

- 36 pt. 72 pt.
- 48 pt. 96 pt.
- 60 pt. 120 pt.

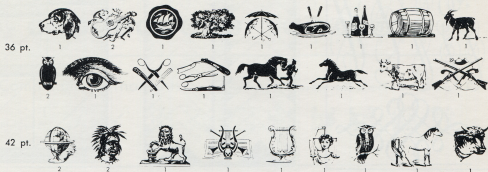
Attention is called to the fact that the laws of the United States and many individual states restrict or prohibit the use of the United States flag in advertising and business printing. All typecuts or type representations of the flag that are made, sold or offered for sale by American Type Founders are made and sold on the condition that they are not to be used in any manner that is prohibited by these laws.



60 point



**Typecast Antiques** *Figure under each unit shows how many of each a font contains*



**Troyer Zodions** *Complete fonts shown*



48 pt. also available.

**Virkotype Combination Monograms**



**Newport Monograms**



