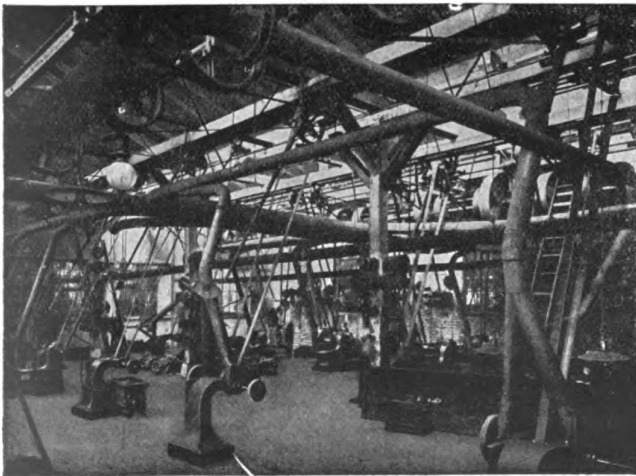


THE NEW MODEL No. 5.

in all over-sea countries. The manufacturers found themselves handicapped in coping with orders and had to increase the factory, special new machinery having been installed which enables the manufacturers to give better attention to every part of the work, finish included. The manufacturers are now very proud of their factory. The "Torpedo" was the only typewriter which obtained the High Gold Medal at the Odessa (Russian) Exhibition, although other typewriters were exhibited there.

At the end of the year the Weilwerke, G. m. b. H., began to market their new model 5, and the improvements on this machine are the outcome of special study and experience of both technical and commercial typewriter men whom the company has added to the staff. With the present improvements the makers now feel equal to meeting any competition. All the well-known features of the "Torpedo," such as the interchangeable carriage by one action, the easy manner of getting to all parts of the machine, the space writing device, full visible writing, and numerous others, remain on the new model, and to these many advantageous improvements have been added. The main feature of the new model is the light, elastic touch, and there is practically no limit to the speed. Although the previous model of the machine gave great speed, the



DRILL ROOM OF THE TORPEDO FACTORY.

ingenious and careful arrangement of the type bars in the new model now make this a distinct feature on the "Torpedo." The manufacturers now call the machine a rapid typewriter "par excellence." The depression of the keys is not so deep as previously.

Another improvement is the ribbon device which works easily and surely; the ribbon movement takes effect with the movement of the carriage. As a stencil cutter the "Torpedo" is admirable, and for this work the ribbon can be removed by a push button placed on the front of the machine. An improvement on the carriage is that the entire frame is only one piece; thus the manufacturers have added to its solidity. Among other advantages of the "Torpedo" we might mention the back spacer, secret lock of the machine and the easy manner in which the carriage may be removed for a general cleaning of the machine. If desired, a two-color device may be attached to the machine, and also a column selector.

From the illustration it is apparent that the manufacturers have greatly improved the machine; also the views we give of the factory point out that the typewriter department is no small one in its enterprise. The raw material is tested before being used, and from the forging and drilling departments up to the final inspection every hand has one ambition only—to turn out a good typewriter.

There are a few countries remaining in which the "Torpedo" is not represented, and those interested should write at once for full particulars of the new model 5 "Torpedo" to the manufacturers, Weilwerke, G. m. b. H., Rodelheim, Frankfurt-on-Main, Germany.

### The Firm of E. & F. Gyles, Type Manufacturers, and the New Industry of Duplicating Typewritten Letters

Messrs. E. & F. Gyles, of London, are well-known typefounders, established in 1864, the business having been handed down from father to sons.

They were the first typefounders in London to see a big future for the duplicating typewriting machine, and they accordingly laid themselves out to get as much of this business as possible. And they have succeeded remarkably well, for we understand that they are making type for nearly all the firms that make duplicators, both the flat-bed and the rotary kind, at home and abroad. They have made a special study of the requirements for duplicating work, and when a new duplicating machine is being put on the market they can give valuable advice to the makers. They are able to make type in any shape or form to suit any machine, whether for duplicating or addressing purposes. They match the type on a good many of the leading typewriters, including the Remington, Smith Premier, etc., and they make it in most of the European languages, including Russian. We strongly recommend readers to inquire into the value of the type of Messrs. E. & F. Gyles before placing orders elsewhere. Their charges will be found extremely moderate. A postcard addressed to them at 4 and 5 Crawford Passage, Farringdon Road, London, E. C., will bring a booklet of the various faces of duplicating type.

### Window Smashing Mystery

Following a crash of glass, a man was seen fleeing down Bromfield toward Washington street, in Boston. Several buildings are in process of construction in the vicinity and many bricks are lying about. The man made use of one of these in breaking a window of the American Typewriting Co.'s store on Bromfield street. In addition to the plate glass window, valued at \$75, a showcase was damaged. A window was broken in the same street in a similar way the night before. Nothing was stolen in either case. The police suspect the same man committed both acts.