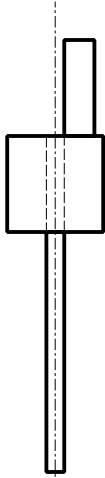
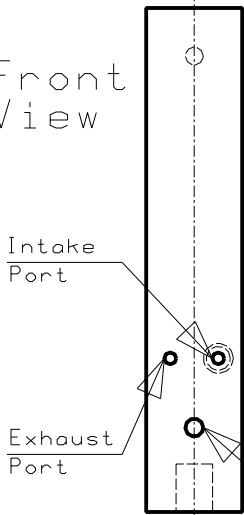


Material: 6061-T6 aluminum for Tower  
 (or other aluminum or  
 brass alloy as convenient)  
 Mild steel for Pivot Rod  
 Brass tube for Intake Tube  
 (5/32 O.D., >=1/16 I.D.)

Top  
View



Front  
View



Intake  
Port

Exhaust  
Port

Drill #43

Crankshaft Bearing  
Through Drill 3/32

Intake Tube

Pivot Rod, 3/32

1.938  
(1 15/16)

2.19  
(2 3/16)

0.44  
(7/16)

1.2  
(1 1/4)

0.4  
3/8

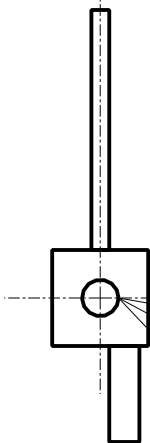
0.5  
(1/2)

Right Side  
View

Note: Intake Port,  
Intake Tube, and  
Exhaust Port shown but  
not located. They are  
located interactively  
during construction.

Mounting Hole  
Drill #23  
Tap 10-24

Bottom View



Scale 1:1 in postscript file  
 Scale undefined in screen image  
 Dimensions in inches



PROJECT	N2K BALLOON AIR ENGINE	
PART	TOWER	
DESIGNED BY	JM	DRAWN BY DMM
2000-02-01	REV 1.3	
2000-01-26	BEGUN	
DWG COPYRIGHT 2000 DMM; GNU GPL		N2K-03