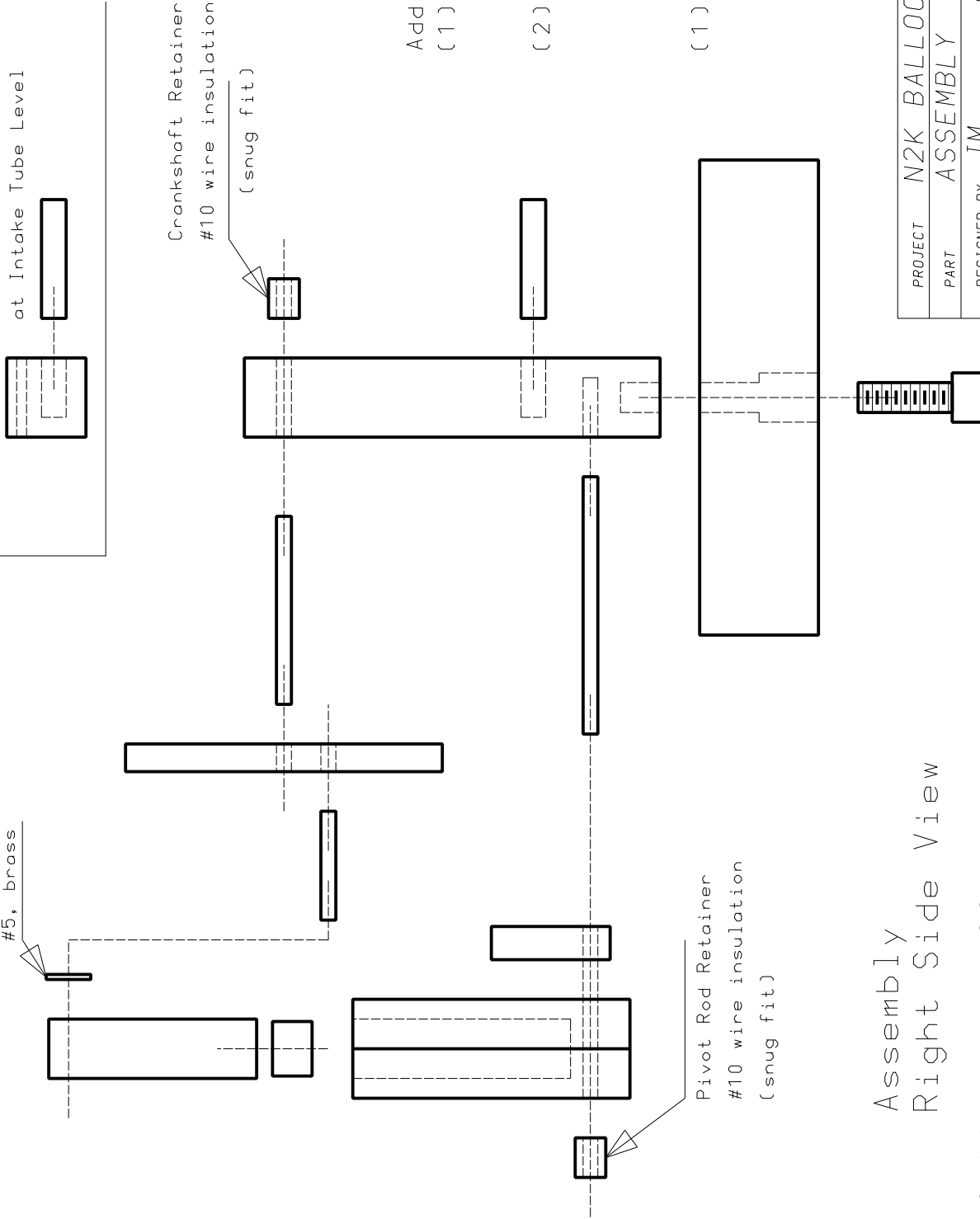


Crankpin Washer
#5, brass

View from Above
at Intake Tube Level



Additional Parts:
 (1) socket head
 machine screw
 #10-24tpi - 1/2in
 (2) 1/4 lengths
 10 gauge
 electrical wire
 insulation
 (strip off wire)
 (1) washer, #5, brass

Assembly Right Side View

Scale 1:1 in postscript file
 Scale undefined in screen image
 Dimensions in inches



PROJECT	N2K BALLOON AIR ENGINE		
PART	ASSEMBLY		
DESIGNED BY	JM	DRAWN BY	DMM
2000-02-04	REV 1.6	2000-02-03	BEGUN
DWG COPYRIGHT 2000 DMM; GNU GPL			
			N2K-06