



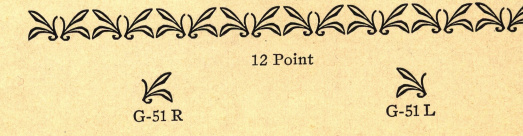
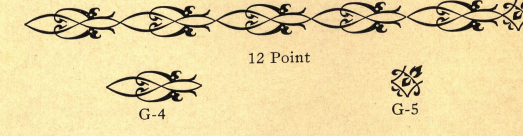
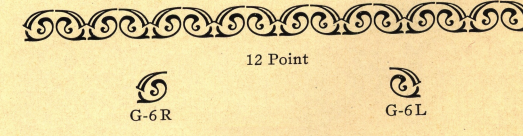
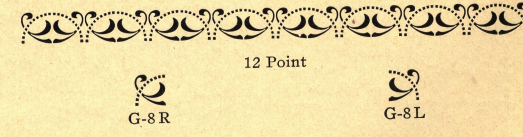
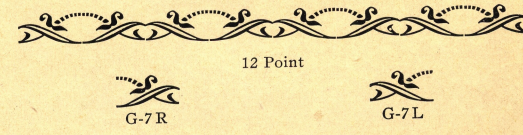
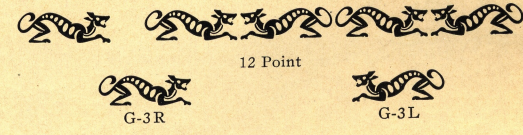
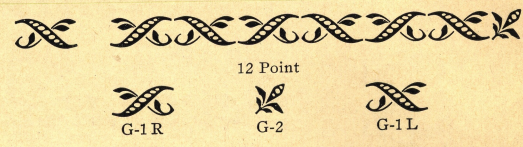
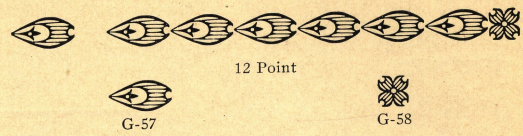
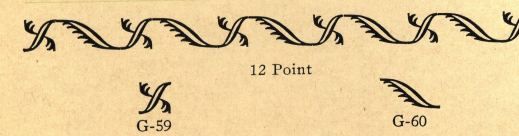
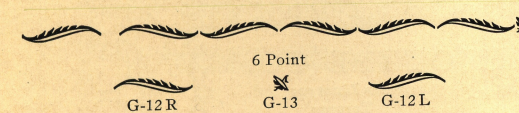
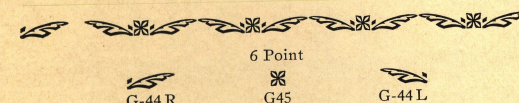
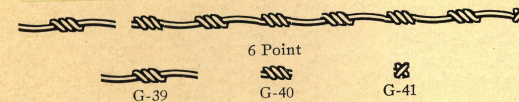
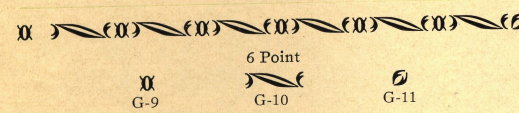
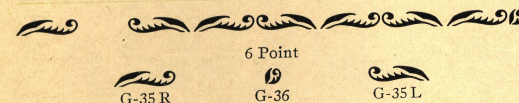
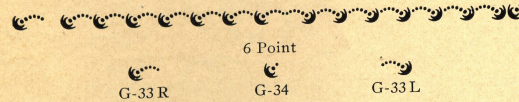
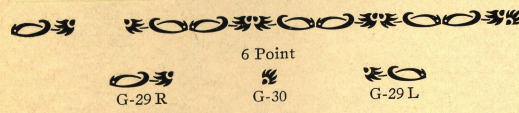
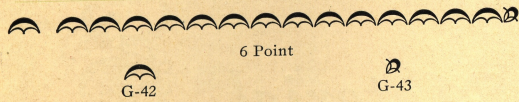
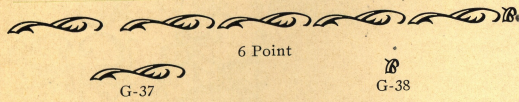
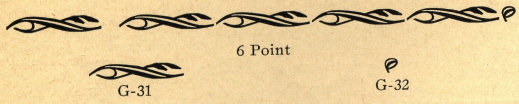
TRADE **LINOTYPE** MARK

*Garamond*  
*Decorative Material*

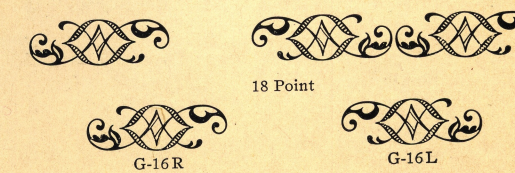
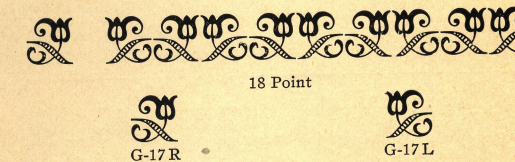
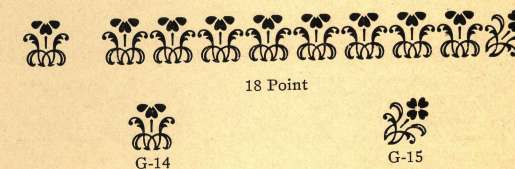
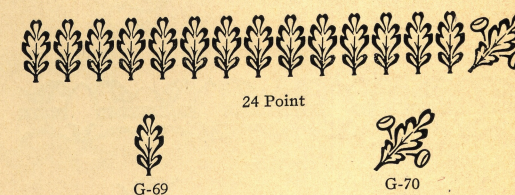
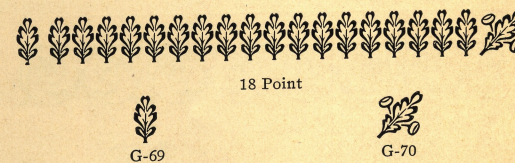
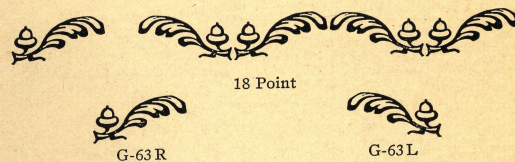
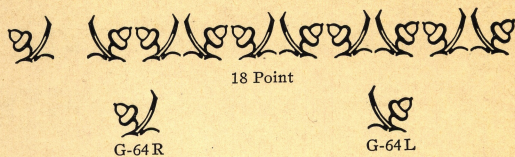
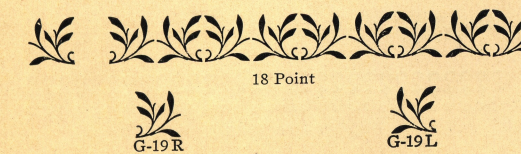
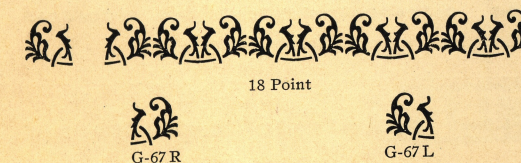
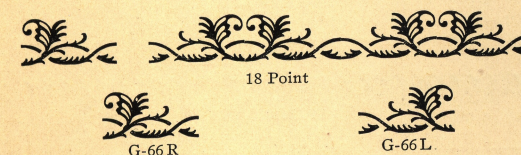
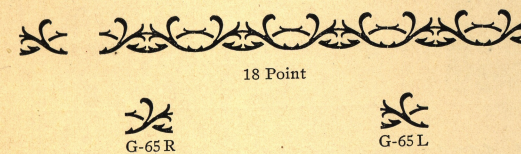
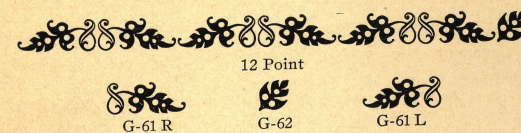
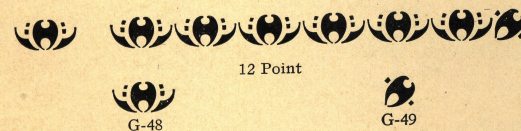
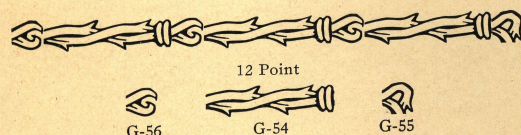
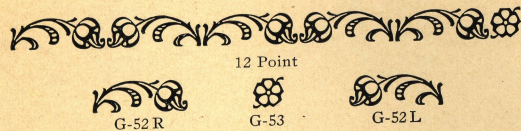
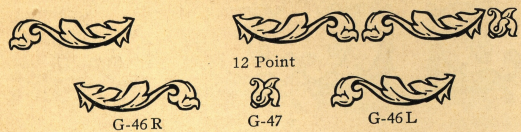
*Designed by*  
*T. M. Cleland*

**MERGENTHALER LINOTYPE CO.**  
San Francisco Chicago Brooklyn, New York Canadian Linotype, Ltd.  
New Orleans Toronto  
*Representatives in the Principal Cities of the World*

### Garamond Borders



Border Matrices TRADE LINOTYPE MARK Shown in Families



Border Matrices LINO TYPE MARK Shown in Families



18 Point



G-73



G-74



24 Point



G-73



G-74



24 Point



G-71



G-72



24 Point



G-20 R



G-20 L



24 Point



G-21 R



G-21 L



24 Point



G-22 R



G-22 L



36 Point



G-23 R



G-23 L



36 Point



G-24 R



G-24 L



36 Point

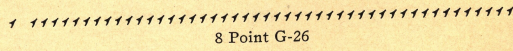


G-25 R

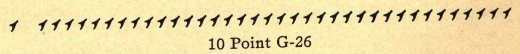


G-25 L

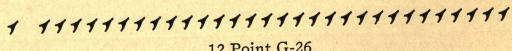
G-26, G-27 and G-28 were not designed by Mr. Cleland



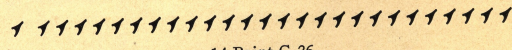
8 Point G-26



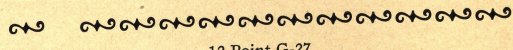
10 Point G-26



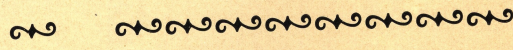
12 Point G-26



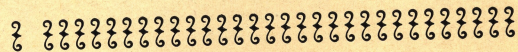
14 Point G-26



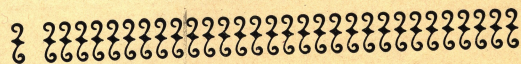
12 Point G-27



18 Point G-27



12 Point G-28



18 Point G-28



12 Point G-6 R, G-6 L, G-7 R, G-7 L, G-8 R, G-8 L

12 Point G-50 R, G-50 L, G-51 R, G-51 L

12 Point G-52 R, G-52 L, G-53

Garamond Borders  
in Combination

12 Point G-8 R, G-8 L (Mitered Corners)

12 Point G-55, G-56

12 Point G-51 R, G-51 L

12 Point G-6 R, G-6 L (Mitered Corners)

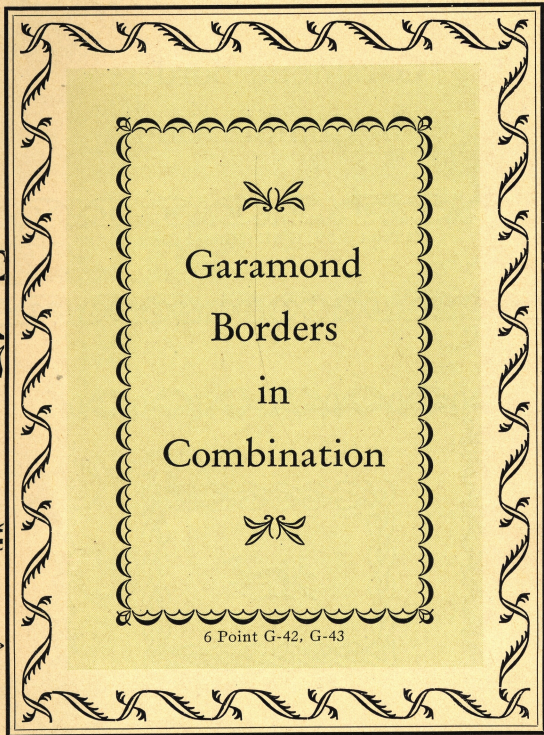
TRADE **LINOTYPE** MARK

12 Point G-4, G-5

18 Point G-65 R, G-65 L, G-66 R, G-66 L, G-67 R, G-67 L

18 Point G-18, G-19 R, G-19 L

12 Point G-1 R, G-1 L, G-2



6 Point G-42, G-43

12 Point G-59, G-60. 5 Point Matrix Slide 508

TRADE **LINOTYPE** MARK

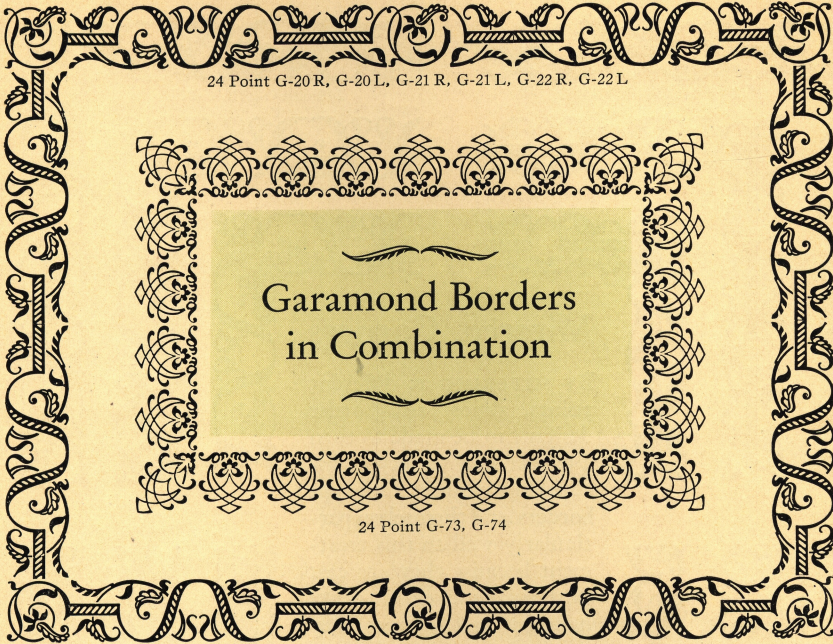
12 Point G-61 R, G-61 L, G-62

12 Point G-57, G-58

18 Point G-16 R, G-16 L, G-17 R, G-17 L



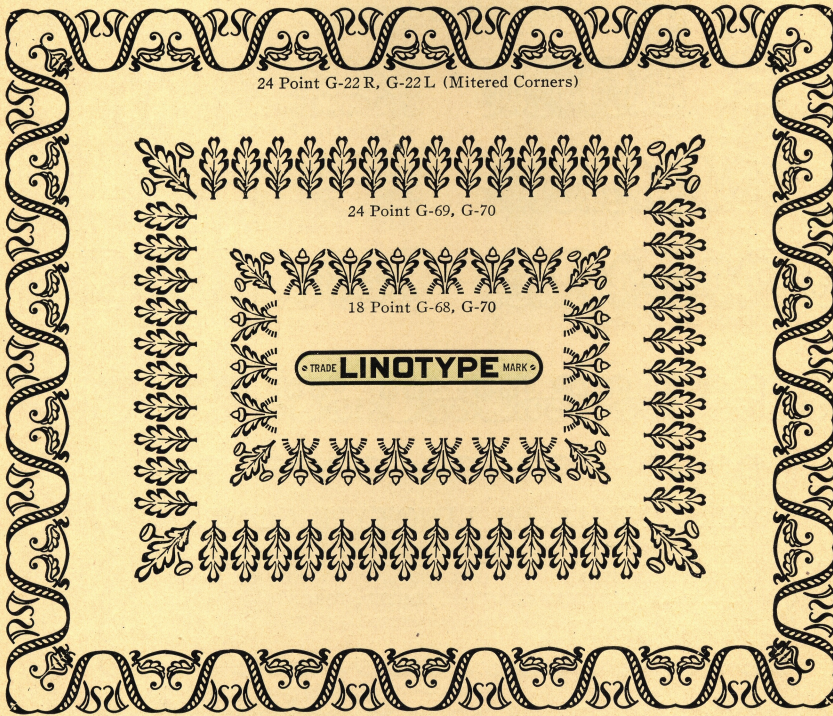
36 Point G-23 R, G-23 L



24 Point G-20 R, G-20 L, G-21 R, G-21 L, G-22 R, G-22 L

Garamond Borders  
in Combination

24 Point G-73, G-74



24 Point G-22 R, G-22 L (Mitered Corners)



24 Point G-69, G-70

18 Point G-68, G-70

TRADE **LINOTYPE** MARK

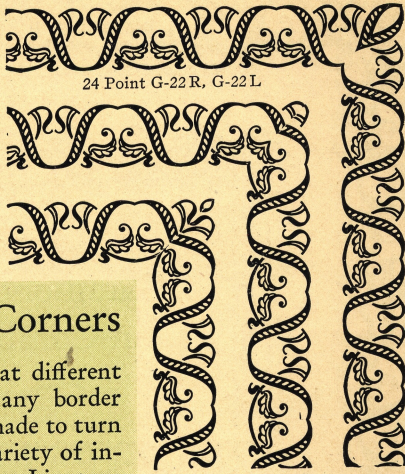




36 Point G-24 R, G-24 L



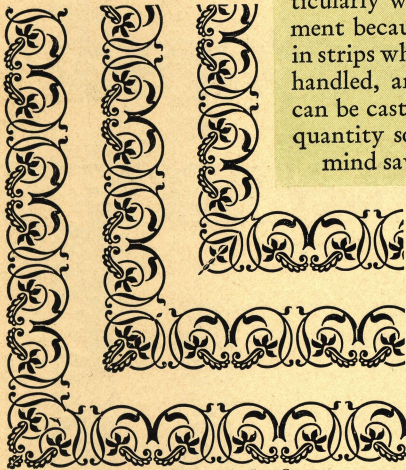
24 Point G-21 R, G-21 L



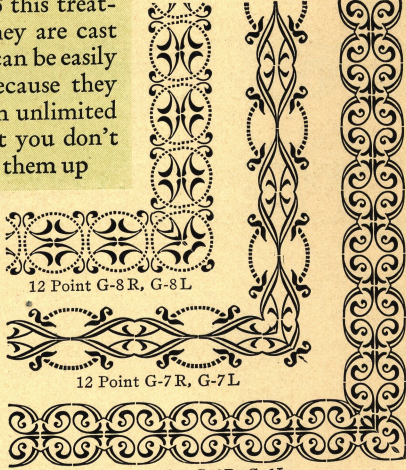
24 Point G-22 R, G-22 L

### Mitered Corners

By MITERING at different points, almost any border design can be made to turn a corner in a variety of interesting manners. Linotype borders lend themselves particularly well to this treatment because they are cast in strips which can be easily handled, and because they can be cast up in unlimited quantity so that you don't mind sawing them up



24 Point G-20 R, G-20 L



12 Point G-8 R, G-8 L

12 Point G-7 R, G-7 L

12 Point G-6 R, G-6 L



MERGENTHALER LINOTYPE COMPANY

Brooklyn, New York

SAN FRANCISCO CHICAGO NEW ORLEANS

CANADIAN LINOTYPE, LIMITED, TORONTO

Representatives in the Principal Cities of the World

6 Point G-42

18 Point G-17 R, G-17 L