

Plain Rule Matrix Slides

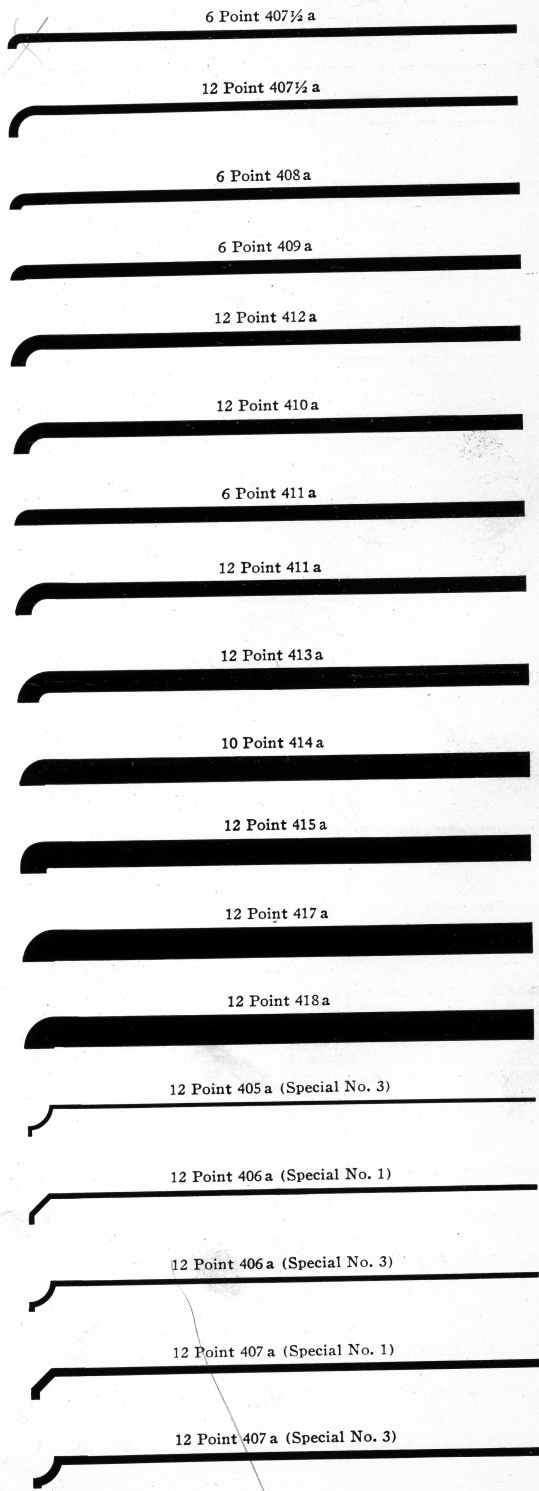
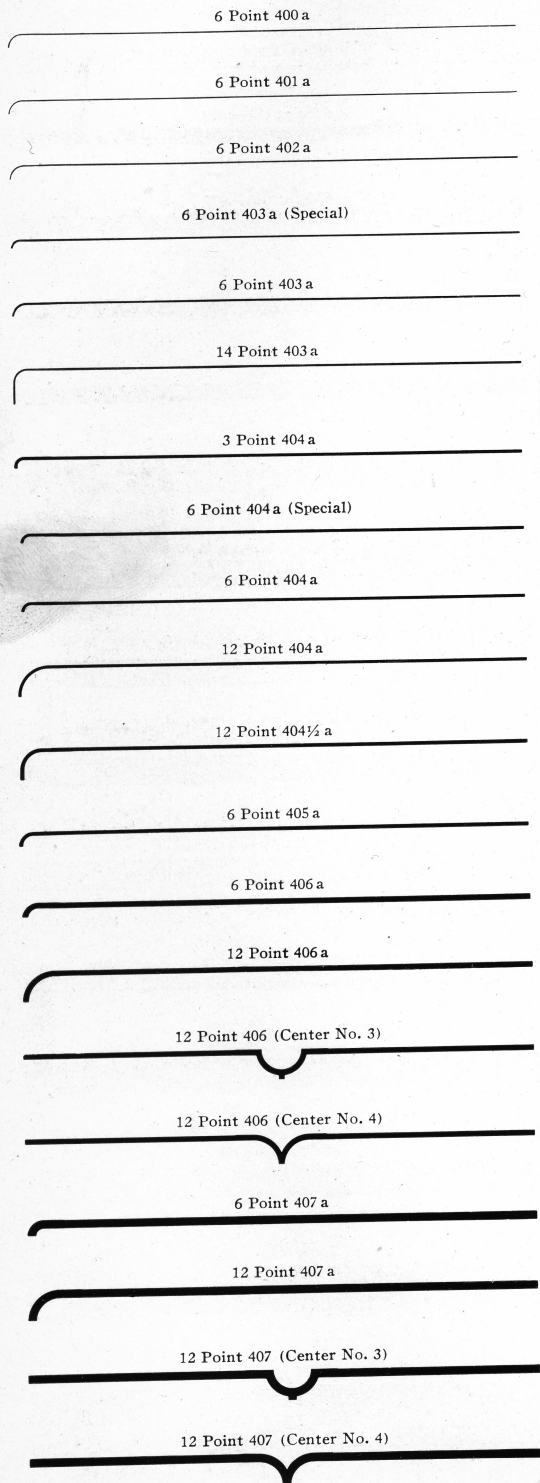
Supplied in any length up to 30 ems pica

The decimal following the slide number designates the weight of face of rule in thousandths of an inch

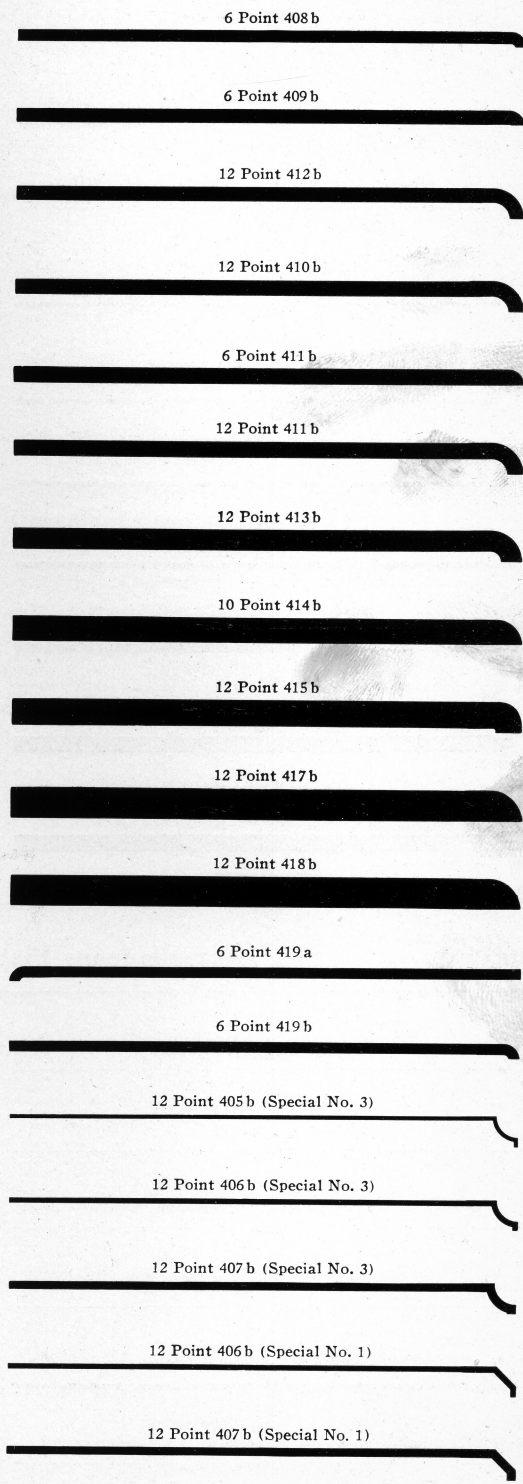
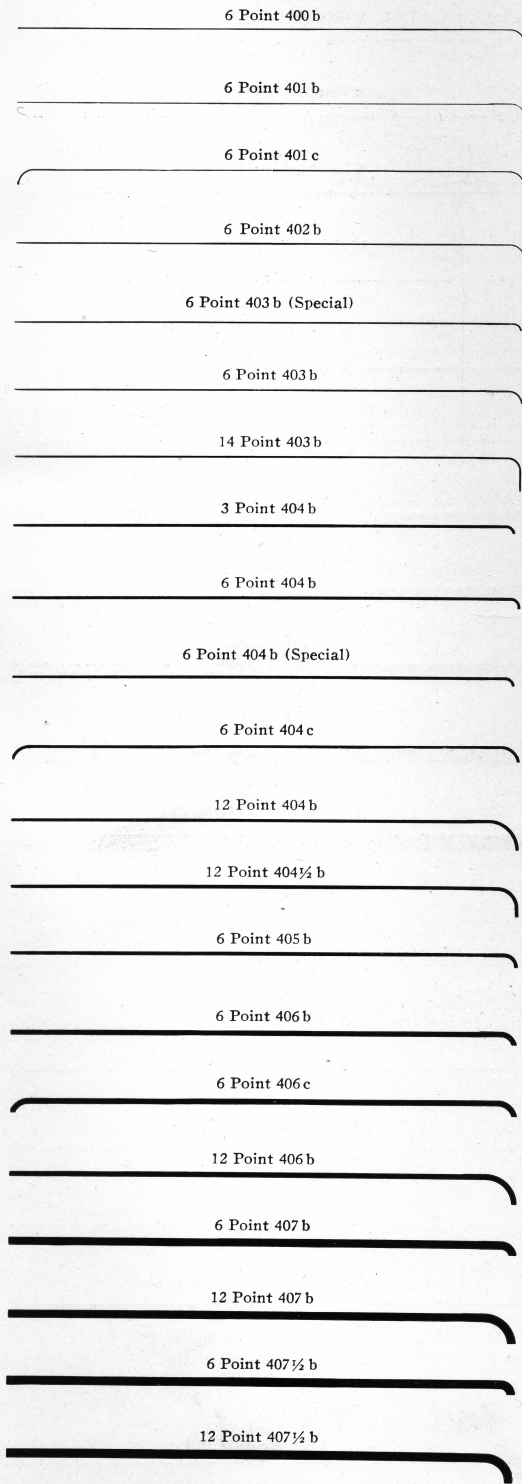
2 Point 401—.002½	6 Point 412—.073
2 Point 400—.003¼	6 Point 410—.077
2 Point 402—.004	6 Point 411—.080
2 Point 403—.008	6 Point 426—.083
6 Point 423—.011 (Center)	8 Point 413—.107¾
2 Point 404—.014	10 Point 414—.128½
3 Point 404 w—.014 (Center)	10 Point 415—.135
2 Point 404½—.018	10 Point 420—.140
2 Point 405—.020	12 Point 416—.152
3 Point 406—.028	12 Point 418—.156
3 Point 425—.041	12 Point 417—.160
4 Point 407—.042	12 Point 421—.168
4 Point 407½—.045	18 Point 2002—.245
4 Point 427—.054¼	24 Point 3504—.328
4 Point 419—.056	
5 Point 408—.058	
6 Point 409—.070	

Matrix Slides with 2, 3 or 4 point face will cast on edge of slug bodies 5 point and larger. [See page 57.]

Plain Rule Matrix Slides with Round Corners



Plain Rule Matrix Slides with Round Corners



Plain Rule Matrix Slides with Round Corners

6 Point 401 a (Reversed)	6 Point 401 b (Reversed)
6 Point 403 a (Reversed)	6 Point 403 b (Reversed)
6 Point 404 a (Reversed)	6 Point 404 b (Reversed)
12 Point 404 a (Reversed)	12 Point 404 b (Reversed)
12 Point 404½ a (Reversed)	12 Point 404½ b (Reversed)
6 Point 405 a (Reversed)	6 Point 405 b (Reversed)
6 Point 406 a (Reversed)	6 Point 406 b (Reversed)
6 Point 407 a (Reversed)	6 Point 407 b (Reversed)
12 Point 410 a (Reversed)	6 Point 407½ b (Reversed)
12 Point 411 a (Reversed)	12 Point 410 b (Reversed)
	12 Point 411 b (Reversed)

Miscellaneous Plain Rule Matrix Slides

6 Point 400 a (Special No. 1)	6 Point 400 b (Special No. 1)
6 Point 400 a (Special No. 2)	6 Point 400 b (Special No. 2)
6 Point 400 a (Special No. 3)	6 Point 400 b (Special No. 3)
6 Point 401 a (Special No. 4)	6 Point 401 b (Special No. 4)
6 Point 406 a (Special)	6 Point 406 b (Special)
6 Point 402 (Special)	8 Point 402 (Special)

Plain Rule Matrix Slides with Square Corners

6 Point 402 a

6 Point 403 a

6 Point 404 a

12 Point 404 a

6 Point 405 a

12 Point 405 a

6 Point 406 a

10 Point 406 a

12 Point 406 a (Special No. 2)

12 Point 406 (Center No. 1)

12 Point 406 (Center No. 2)

6 Point 407 a

12 Point 407 a (Special No. 2)

6 Point 404 a (Reversed)

12 Point 404 a (Reversed)

6 Point 405 a (Reversed)

12 Point 405 a (Reversed)

6 Point 406 a (Reversed)

6 Point 402 b

6 Point 404 b

12 Point 404 b

6 Point 405 b

12 Point 405 b

6 Point 406 b

10 Point 406 b

12 Point 406 b (Special No. 2)

12 Point 407 b (Special No. 2)

12 Point 407 (Center No. 1)

12 Point 407 (Center No. 2)

6 Point 404 b (Reversed)

12 Point 404 b (Reversed)

6 Point 405 b (Reversed)

12 Point 405 b (Reversed)

6 Point 406 b (Reversed)